



Vital Statistics Annual and Provisional Reports [HELP](#)

These annual and provisional reports summarize data compiled from the original birth, death, fetal death, marriage, and dissolution records filed with the Florida Bureau of Vital Statistics, as required by law.

HELP information is located in the upper right corner of this page. All PDF files open in a new window and require use of Adobe Acrobat Reader available from www.adobe.com.

Annual Reports: Available in PDF format starting with 1998. Select a year from the Florida Vital Statistics Annual Reports year selection box. To open a section, click on the PDF icon to the right of the desired section. To save a copy of a section, place the mouse over the PDF icon, right click, and select "save target as".

Provisional Reports: Available starting with 2006. Select a year from the box in front of the Florida Vital Statistics Provisional Reports. Next, click on the radio button to the right. From the next page, select the particular table you need. The individual tables may be exported to formats such as MS Excel, MS Word and Adobe PDF.

2012 **Florida Vital Statistics Annual Reports**

- Entire Annual Report
- Introduction
- Population
- Births
- Fetal and Infant Deaths
- Deaths
- Marriages and Dissolutions of Marriage
- Terminations of Pregnancy

Section Reports



2013 **Florida Vital Statistics Provisional Reports**

For more information:

FloridaCHARTS.com

[Birth Query](#) Includes provisional birth data, updated weekly.

[Death Query](#) Includes provisional birth data, updated weekly.

[Infant Death Query](#) Includes provisional birth data, updated weekly.

[Marriage Query](#) Includes provisional marriage data, updated weekly.

[Dissolution of Marriage Query](#) Includes provisional dissolution data, updated weekly.

[Population Query](#)

Fetal and Infant Deaths

FETAL DEATHS AND INFANT DEATHS

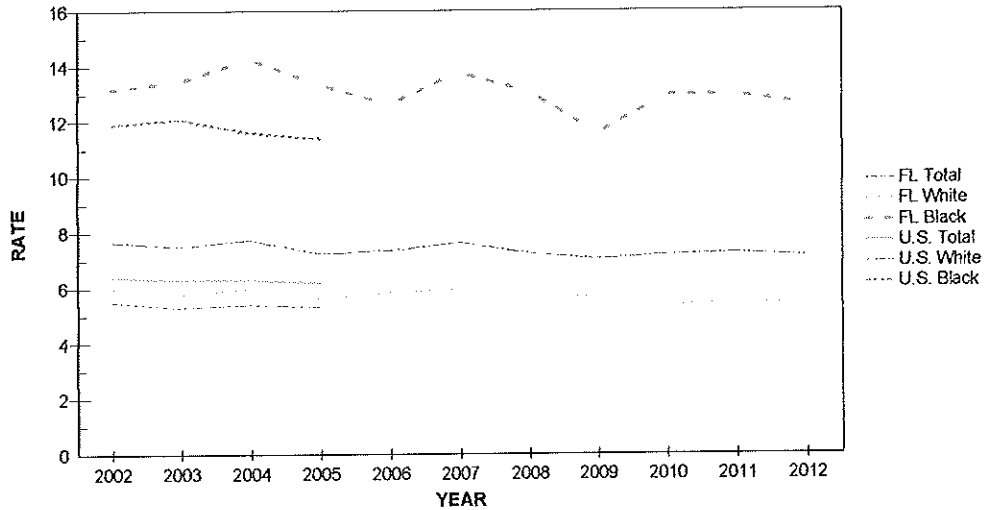
- The number of resident fetal deaths (stillbirths occurring at 20 or more weeks of gestation) decreased slightly from 1,558 in 2011 to 1,530 in 2012. The rate also decreased slightly from 7.3 per 1,000 live births and fetal deaths to 7.1 per 1,000 live births and fetal deaths in 2012.
- Between 2011 and 2012, resident fetal deaths decreased slightly among whites from 832 to 822, decreased slightly among blacks from 641 to 626 and increased by one for other races from 76 to 77.
- Of all resident fetal deaths in 2012, 68.2 percent were to mothers of non-Hispanic and non-Haitian origin, 23.3 percent were to mothers of Hispanic origin, 6.2 percent were to mothers of Haitian origin and 2.2 percent were to mothers whose ethnicity was unknown.
- Between 2011 and 2012, the neonatal death rate decreased slightly from 4.3 per 1,000 live births to 3.9 per 1,000 live births. The 2012 rate represents less than half the rate of 1980 (9.7 per 1,000 live births).
- Between 2011 and 2012, the black neonatal death rate decreased from 8.2 per 1,000 live births to 6.6 per 1,000 live births. The black neonatal death rate (6.6 per 1,000 live births) is twice the white rate (3.0 per 1,000 live births).
- Florida's 2012 infant mortality rate is 6.0 per 1,000 live births. This is a record low for the state rate. From 2000 to 2008, the resident infant mortality rate only slightly fluctuated between a low of 7.0 per 1,000 live births to a high of 7.5 per 1,000 live births. The 2012 resident infant mortality rate has dropped more than 33.3 percent since 1990 and is currently less than half the rate of 1980.
- The resident infant mortality rate decreased slightly from 6.4 per 1,000 live births in 2011 to 6.0 per 1,000 live births in 2012. The white infant mortality rate remained unchanged with 4.6 per 1,000 live births in 2011 and 4.6 per 1,000 live births in 2012. The black infant mortality rate slightly decreased from 12.0 per 1,000 live births in 2011 to 10.7 per 1,000 live births in 2012.
- In 2012, resident infant deaths among non-Hispanic and non-Haitian origin accounted for 71.1 percent of all resident infant deaths. Among other ethnic groups, infants of Hispanic origin represented 22.7 percent, infants of Haitian origin represented 4.4 percent and 1.7 percent occurred to infants whose ethnicity was unknown.
- Among all resident infant deaths during 2012, 64.2 percent were neonatal deaths (occurring before infants were 28 days old). Furthermore, 39.4 percent of infant deaths occurred to infants who were less than one day old.
- The top four leading causes of resident infant deaths in 2012 were: 1) Perinatal Period Conditions (641 deaths), 2) Congenital Malformations (232 deaths), 3) Unintentional Injuries (Accidents) (98 deaths), and 4) Sudden Infant Death Syndrome (SIDS) (54 deaths). These causes accounted for 79.8 percent of all resident infant deaths.

**CHART F-1: RESIDENT FETAL DEATHS AND RATES PER 1,000 LIVE BIRTHS AND FETAL DEATHS,
BY RACE, FLORIDA AND UNITED STATES, CENSUS YEARS 1970-2000 AND 2002-2012**

YEAR	NUMBER OF FETAL DEATHS - FL				RATES PER 1,000 - FL			RATES - U.S.		
	TOTAL	WHITE	BLACK	OTHER	TOTAL	WHITE	BLACK	TOTAL	WHITE	BLACK
1970	1,708	1,034	608	7	14.6	11.8	21.6	14.0	12.3	23.2
1980	1,356	848	476	15	10.2	8.6	14.2	9.1	8.1	14.7
1990	1,811	1,071	695	25	9.0	7.1	14.8	7.5	6.4	13.3
2000	1,675	954	667	37	8.1	6.3	13.9	6.6	5.6	12.4
2002	1,591	920	616	41	7.7	6.0	13.2	6.4	5.5	11.9
2003	1,604	912	643	35	7.5	5.8	13.5	6.3	5.3	12.1
2004	1,701	966	680	43	7.7	6.0	14.3	6.3	5.4	11.6
2005	1,650	938	649	39	7.2	5.6	13.4	6.2	5.3	11.4
2006	1,756	1,020	650	83	7.3	5.8	12.6	NA	NA	NA
2007	1,840	1,042	720	72	7.6	5.9	13.8	NA	NA	NA
2008	1,688	951	681	44	7.2	5.6	13.1	NA	NA	NA
2009	1,569	904	592	63	7.0	5.6	11.6	NA	NA	NA
2010	1,551	822	645	79	7.2	5.3	12.9	NA	NA	NA
2011	1,558	832	641	76	7.3	5.4	13.0	NA	NA	NA
2012	1,530	822	626	77	7.1	5.4	12.6	NA	NA	NA

1. Data based on the race of the mother.

**GRAPH F-1: RESIDENT FETAL DEATH RATES PER 1,000 LIVE BIRTHS AND FETAL DEATHS,
BY RACE OF MOTHER, FLORIDA, AND UNITED STATES TOTAL, 2002-2012**



**CHART F-2: RESIDENT NEONATAL DEATHS AND RATES PER 1,000 LIVE BIRTHS,
BY RACE, FLORIDA AND UNITED STATES,
CENSUS YEARS 1970-2000 AND 2002-2012**

YEAR	NUMBER OF NEONATAL DEATHS - FL				RATES - FL ¹			RATE - U.S.		
	TOTAL	WHITE	BLACK	OTHER	TOTAL	WHITE	BLACK	TOTAL	WHITE	BLACK
1970	1,847	1,198	636	11	16.0	13.8	23.1	15.1	13.8	22.8
1980	1,282	791	487	3	9.7	8.1	14.7	8.5	7.4	14.6
1990	1,227	742	476	8	6.2	5.0	10.3	5.9	4.8	11.6
2000	925	526	384	13	4.5	3.5	8.1	4.6	3.8	9.4
2002	1,032	596	419	17	5.0	3.9	9.1	4.7	3.9	9.5
2003	1,025	584	420	18	4.8	3.7	8.9	4.6	3.9	9.4
2004	989	563	401	24	4.5	3.5	8.5	4.5	3.8	9.1
2005	1,024	544	422	57	4.5	3.3	8.8	4.5	3.8	9.1
2006	1,122	630	436	54	4.7	3.6	8.6	4.5	3.7	8.8
2007	1,062	573	422	65	4.4	3.3	8.2	4.4	3.7	8.7
2008	1,061	592	402	65	4.6	3.5	7.8	4.3	3.6	8.2
2009	996	513	438	42	4.5	3.2	8.7	4.2	3.5	8.2
2010	929	497	385	46	4.3	3.2	7.8	4.1	3.5	7.5
2011	915	465	401	46	4.3	3.1	8.2	4.0 ²	3.5 ²	7.5 ²
2012	826	457	321	47	3.9	3.0	6.6	NA	NA	NA

1. Rates based on neonatal deaths by race of decedent, Live births based on race of mother.
2. Preliminary data.

**GRAPH F-2: RESIDENT NEONATAL DEATH RATES PER 1,000 LIVE BIRTHS, BY RACE,
FLORIDA AND UNITED STATES, 2002-2012**

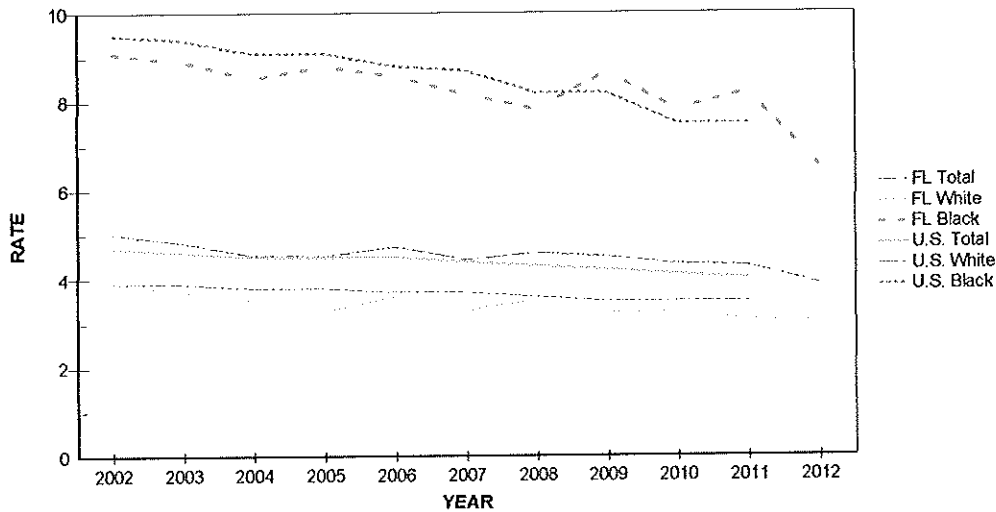


CHART F-3: RESIDENT INFANT DEATHS AND RATES PER 1,000 LIVE BIRTHS, BY RACE, FLORIDA AND UNITED STATES, CENSUS YEARS 1970-2000 AND 2002-2012

YEAR	NUMBER OF INFANT DEATHS - FL ¹				RATES - FL			RATE - U.S.		
	TOTAL	WHITE	BLACK	OTHER	TOTAL	WHITE	BLACK	TOTAL	WHITE	BLACK
1970	2,469	1,538	918	11	21.4	17.7	33.3	20.0	17.8	32.7
1980	1,918	1,137	774	6	14.6	11.7	23.4	12.6	10.9	22.1
1990	1,912	1,123	775	12	9.6	7.5	16.7	9.2	7.6	18.0
2000	1,423	810	594	17	7.0	5.4	12.6	6.9	5.7	14.1
2002	1,548	892	629	27	7.5	5.9	13.6	7.0	5.8	14.4
2003	1,584	907	647	27	7.5	5.8	13.7	6.9	5.7	14.0
2004	1,536	876	621	38	7.0	5.5	13.2	6.8	5.7	13.8
2005	1,626	882	652	91	7.2	5.3	13.6	6.9	5.7	13.7
2006	1,713	974	653	84	7.2	5.6	12.9	6.7	5.6	13.3
2007	1,689	906	689	92	7.1	5.2	13.4	6.8	5.6	13.2
2008	1,667	914	661	90	7.2	5.5	12.9	6.6	5.5	12.7
2009	1,525	780	667	75	6.9	4.9	13.2	6.4	5.3	12.6
2010	1,400	750	580	69	6.5	4.9	11.8	6.2	5.2	11.6
2011	1,372	698	584	86	6.4	4.6	12.0	6.1 ²	5.1 ²	11.4 ²
2012	1,285	687	523	73	6.0	4.6	10.7	NA	NA	NA

1. Infant deaths based on race of the decedent. Live births based on race of mother.
 2. Preliminary data.

GRAPH F-3: RESIDENT INFANT DEATH RATES PER 1,000 LIVE BIRTHS, BY RACE, FLORIDA AND UNITED STATES, 2002-2012

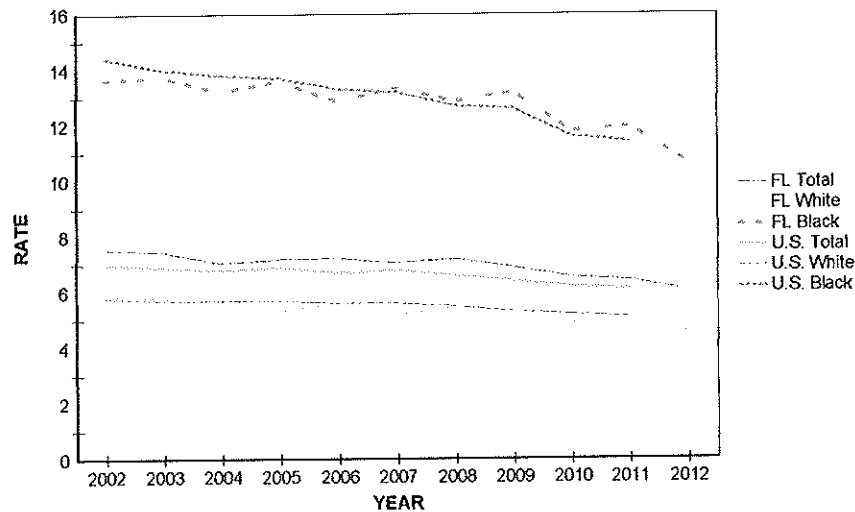


TABLE F-1: RESIDENT AND RECORDED FETAL DEATHS (OF 20 OR MORE WEEKS GESTATION) AND RATES PER 1,000 LIVE BIRTHS AND FETAL DEATHS, BY RACE OF MOTHER, BY COUNTY, FLORIDA, 2012

	RESIDENT FETAL DEATHS					RESIDENT FETAL DEATHS		
	NUMBERS					RATES		
	TOTAL	WHITE	BLACK	OTHER	UNK	TOTAL	WHITE	BLACK
FLORIDA	1530	822	626	77	5	7.1	5.4	12.6
ALACHUA	23	6	17	0	0	7.9	3.4	19.6
BAKER	5	3	1	1	0	14.5	10.1	22.2
BAY	18	17	1	0	0	7.8	9.5	3.0
BRADFORD	0	0	0	0	0	0.0	0.0	0.0
BREVARD	45	33	11	1	0	9.0	8.4	14.7
BROWARD	181	66	100	13	2	8.5	5.7	11.9
CALHOUN	0	0	0	0	0	0.0	0.0	0.0
CHARLOTTE	5	3	2	0	0	4.8	3.3	24.1
CITRUS	7	6	0	1	0	6.7	6.3	0.0
CLAY	7	6	1	0	0	3.4	3.5	4.2
COLLIER	24	15	8	0	1	7.6	5.5	20.0
COLUMBIA	11	4	7	0	0	14.0	6.6	42.9
MIAMI-DADE	215	113	94	8	0	7.0	5.1	12.3
DESOTO	3	3	0	0	0	8.1	9.5	0.0
DIXIE	1	1	0	0	0	6.2	6.6	0.0
DUVAL	98	39	52	7	0	7.8	5.7	11.4
ESCAMBIA	20	8	12	0	0	5.1	3.2	10.1
FLAGLER	6	3	3	0	0	7.4	4.7	27.5
FRANKLIN	0	0	0	0	0	0.0	0.0	0.0
GADSDEN	3	0	3	0	0	5.7	0.0	9.4
GILCHRIST	2	2	0	0	0	9.6	10.2	0.0
GLADES	0	0	0	0	0	0.0	0.0	0.0
GULF	0	0	0	0	0	0.0	0.0	0.0
HAMILTON	0	0	0	0	0	0.0	0.0	0.0
HARDEE	2	2	0	0	0	5.1	5.6	0.0
HENDRY	1	0	0	1	0	1.7	0.0	0.0
HERNANDO	8	7	1	0	0	5.7	5.7	8.7
HIGHLANDS	4	3	0	1	0	4.4	4.2	0.0
HILLSBOROUGH	116	60	49	6	1	7.0	5.1	13.5
HOLMES	3	3	0	0	0	15.5	16.9	0.0
INDIAN RIVER	7	5	1	1	0	5.6	6.5	4.3
JACKSON	2	1	1	0	0	4.0	3.0	7.0
JEFFERSON	1	1	0	0	0	7.1	12.5	0.0
LAFAYETTE	0	0	0	0	0	0.0	0.0	0.0
LAKE	20	15	5	0	0	6.5	6.1	11.1
LEE	47	28	16	3	0	7.3	5.4	17.4
LEON	29	6	19	4	0	9.6	3.8	15.5
LEVY	6	4	2	0	0	15.6	12.0	42.6
LIBERTY	0	0	0	0	0	0.0	0.0	0.0
MADISON	1	0	1	0	0	4.7	0.0	10.2
MANATEE	30	20	8	2	0	8.7	7.4	17.5
MARION	27	16	10	1	0	8.2	6.4	15.1
MARTIN	3	1	2	0	0	2.7	1.0	21.1
MONROE	3	2	1	0	0	4.2	3.3	12.0
NASSAU	4	3	1	0	0	5.3	4.4	17.2
OKALOOSA	17	14	2	1	0	6.5	6.7	7.0
OKEECHOBEE	1	1	0	0	0	1.9	2.2	0.0
ORANGE	116	57	52	7	0	7.3	5.7	12.2
OSCEOLA	28	22	5	1	0	7.3	6.9	11.4
PALM BEACH	91	39	44	8	0	6.5	4.3	10.8
PASCO	28	26	2	0	0	5.9	6.2	7.1
PINELLAS	53	29	19	5	0	6.2	4.6	12.7
POLK	59	32	27	0	0	8.1	5.8	18.5
PUTNAM	2	1	1	0	0	2.4	1.6	5.6
SAINT JOHNS	7	5	0	2	0	3.7	3.0	0.0
SAINT LUCIE	29	14	15	0	0	9.7	7.1	17.5
SANTA ROSA	7	7	0	0	0	3.8	4.2	0.0
SARASOTA	12	10	2	0	0	4.1	4.1	7.1
SEMINOLE	26	15	10	1	0	5.9	4.4	14.0
SUMTER	3	1	2	0	0	6.4	2.7	22.2
SUWANNEE	10	4	6	0	0	22.0	10.7	88.2
TAYLOR	0	0	0	0	0	0.0	0.0	0.0
UNION	2	2	0	0	0	11.0	13.2	0.0
VOLUSIA	43	34	7	2	0	9.1	9.2	9.0
WAKULLA	0	0	0	0	0	0.0	0.0	0.0
WALTON	5	3	2	0	0	7.5	5.0	50.0
WASHINGTON	1	1	0	0	0	4.3	5.3	0.0

TABLE F-1 (Cont.): RESIDENT AND RECORDED FETAL DEATHS (OF 20 OR MORE WEEKS GESTATION) AND RATES PER 1,000 LIVE BIRTHS AND FETAL DEATHS, BY RACE OF MOTHER, BY COUNTY, FLORIDA, 2012

	RECORDED FETAL DEATHS					RATES		
	NUMBERS					TOTAL	WHITE	BLACK
	TOTAL	WHITE	BLACK	OTHER	UNK			
FLORIDA	1577	847	644	81	5	7.3	5.6	13.0
ALACHUA	40	20	20	0	0	7.0	4.9	16.0
BAKER	0	0	0	0	0	0.0	0.0	0.0
BAY	18	17	1	0	0	6.5	7.8	2.8
BRADFORD	0	0	0	0	0	0.0	0.0	0.0
BREVARD	37	29	7	1	0	7.5	7.5	9.8
BROWARD	218	82	117	16	3	9.4	6.6	12.5
CALHOUN	0	0	0	0	0	0.0	0.0	---
CHARLOTTE	6	4	2	0	0	5.0	3.9	17.5
CITRUS	5	4	0	1	0	5.4	4.8	0.0
CLAY	9	6	2	1	0	4.2	3.7	4.8
COLLIER	26	17	8	0	1	7.6	5.8	19.3
COLUMBIA	18	6	12	0	0	21.7	10.4	52.4
MIAMI-DADE	204	113	84	7	0	7.3	5.4	13.4
DESOTO	4	4	0	0	0	9.1	10.3	0.0
DIXIE	0	0	0	0	0	0.0	0.0	---
DUVAL	110	48	54	8	0	7.7	5.6	12.0
ESCAMBIA	37	23	12	2	0	6.7	5.8	9.4
FLAGLER	0	0	0	0	0	0.0	0.0	0.0
FRANKLIN	0	0	0	0	0	---	---	---
GADSDEN	0	0	0	0	0	0.0	0.0	0.0
GILCHRIST	0	0	0	0	0	0.0	0.0	---
GLADES	0	0	0	0	0	---	---	---
GULF	0	0	0	0	0	0.0	0.0	---
HAMILTON	0	0	0	0	0	---	---	---
HARDEE	0	0	0	0	0	0.0	0.0	---
HENDRY	0	0	0	0	0	---	---	---
HERNANDO	11	10	1	0	0	6.4	6.5	9.0
HIGHLANDS	4	4	0	0	0	3.3	4.1	0.0
HILLSBOROUGH	132	71	53	7	1	7.1	5.2	13.6
HOLMES	0	0	0	0	0	0.0	0.0	---
INDIAN RIVER	6	4	1	1	0	5.3	6.0	4.9
JACKSON	2	1	1	0	0	4.3	3.3	7.5
JEFFERSON	1	1	0	0	0	1,000.0	1,000.0	---
LAFAYETTE	0	0	0	0	0	---	---	---
LAKE	16	9	7	0	0	5.8	4.2	15.7
LEE	47	27	16	4	0	7.1	5.0	17.4
LEON	34	7	23	4	0	7.2	2.7	12.5
LEVY	0	0	0	0	0	0.0	0.0	---
LIBERTY	0	0	0	0	0	---	---	---
MADISON	0	0	0	0	0	0.0	0.0	---
MANATEE	21	16	4	1	0	7.4	7.3	10.6
MARION	22	11	10	1	0	8.6	5.8	18.7
MARTIN	6	4	2	0	0	3.5	2.8	12.3
MONROE	2	2	0	0	0	3.9	4.7	0.0
NASSAU	2	1	1	0	0	3.5	2.1	15.4
OKALOOSA	16	13	2	1	0	6.4	6.6	7.4
OKEECHOBEE	0	0	0	0	0	0.0	0.0	0.0
ORANGE	168	93	64	11	0	8.3	6.8	13.3
OSCEOLA	20	15	5	0	0	5.3	4.9	12.1
PALM BEACH	112	46	59	7	0	6.8	4.3	12.6
PASCO	11	11	0	0	0	6.4	7.3	0.0
PINELLAS	63	37	21	5	0	6.3	4.8	13.7
POLK	44	21	23	0	0	7.3	4.7	18.4
PUTNAM	1	0	1	0	0	2.1	0.0	7.6
SAINT JOHNS	4	3	0	1	0	3.3	3.0	0.0
SAINT LUCIE	16	8	8	0	0	7.3	5.8	11.4
SANTA ROSA	1	1	0	0	0	2.5	2.8	0.0
SARASOTA	22	14	7	1	0	6.8	5.2	20.6
SEMINOLE	16	9	6	1	0	5.2	3.9	10.3
SUMTER	0	0	0	0	0	0.0	---	---
SUWANNEE	2	1	1	0	0	285.7	250.0	333.3
TAYLOR	0	0	0	0	0	0.0	---	0.0
UNION	0	0	0	0	0	0.0	0.0	0.0
VOLUSIA	39	32	7	0	0	9.3	10.0	9.4
WAKULLA	0	0	0	0	0	0.0	0.0	---
WALTON	4	2	2	0	0	4.3	2.4	45.5
WASHINGTON	0	0	0	0	0	0.0	---	0.0

TABLE F-2: RESIDENT FETAL DEATHS BY HISPANIC OR HAITIAN ORIGIN OF MOTHER, BY COUNTY, FLORIDA, 2012

	NUMBERS											RATE
	HISPANIC ORIGIN											TOTAL HISPANIC
	TOTAL	TOTAL HISPANIC	MEXICAN	PUERTO RICAN	CUBAN	CENTRAL/ SOUTH AMERICAN	OTHER/ UNK HISPANIC	HAITIAN	NON- HISPANIC/ HAITIAN	UNK		
FLORIDA	1,530	357	75	85	60	76	61	95	1,044	34	6.1	
ALACHUA	23	3	0	1	0	1	1	0	20	0	13.9	
BAKER	5	0	0	0	0	0	0	0	5	0	---	
BAY	18	7	3	4	0	0	0	0	11	0	44.6	
BRADFORD	0	0	0	0	0	0	0	0	0	0	---	
BREVARD	45	5	2	2	0	1	0	0	40	0	9.0	
BROWARD	181	40	5	5	5	15	10	29	106	6	6.5	
CALHOUN	0	0	0	0	0	0	0	0	0	0	---	
CHARLOTTE	5	2	1	0	0	0	1	0	3	0	25.3	
CITRUS	7	1	0	1	0	0	0	0	6	0	13.9	
CLAY	7	3	0	3	0	0	0	0	4	0	15.7	
COLLIER	24	5	2	1	0	0	2	8	10	1	3.4	
COLUMBIA	11	0	0	0	0	0	0	0	11	0	---	
MIAMI-DADE	215	102	2	11	41	26	22	17	75	21	5.6	
DESOTO	3	0	0	0	0	0	0	0	3	0	---	
DIXIE	1	0	0	0	0	0	0	0	1	0	---	
DUVAL	98	10	1	3	3	3	0	1	87	0	8.8	
ESCAMBIA	20	3	2	0	1	0	0	0	17	0	13.6	
FLAGLER	6	2	0	2	0	0	0	0	4	0	19.2	
FRANKLIN	0	0	0	0	0	0	0	0	0	0	---	
GADSDEN	3	0	0	0	0	0	0	0	3	0	---	
GILCHRIST	2	1	0	1	0	0	0	0	1	0	55.6	
GLADES	0	0	0	0	0	0	0	0	0	0	---	
GULF	0	0	0	0	0	0	0	0	0	0	---	
HAMILTON	0	0	0	0	0	0	0	0	0	0	---	
HARDEE	2	1	1	0	0	0	0	0	1	0	4.4	
HENDRY	1	0	0	0	0	0	0	0	1	0	---	
HERNANDO	8	0	0	0	0	0	0	1	7	0	---	
HIGHLANDS	4	2	2	0	0	0	0	0	2	0	8.3	
HILLSBOROUGH	116	28	15	8	1	2	2	4	83	1	5.9	
HOLMES	3	0	0	0	0	0	0	0	3	0	---	
INDIAN RIVER	7	3	1	2	0	0	0	0	4	0	12.0	
JACKSON	2	0	0	0	0	0	0	0	2	0	---	
JEFFERSON	1	0	0	0	0	0	0	0	1	0	---	
LAFAYETTE	0	0	0	0	0	0	0	0	0	0	---	
LAKE	20	4	2	1	0	1	0	0	16	0	7.2	
LEE	47	13	3	4	3	2	1	5	29	0	6.8	
LEON	29	0	0	0	0	0	0	0	29	0	---	
LEVY	6	0	0	0	0	0	0	0	6	0	---	
LIBERTY	0	0	0	0	0	0	0	0	0	0	---	
MADISON	1	0	0	0	0	0	0	0	1	0	---	
MANATEE	30	4	3	0	0	0	1	0	26	0	3.9	
MARION	27	2	0	2	0	0	0	0	25	0	4.1	
MARTIN	3	0	0	0	0	0	0	0	3	0	---	
MONROE	3	1	0	0	1	0	0	0	2	0	4.6	
NASSAU	4	1	1	0	0	0	0	0	3	0	30.3	
OKALOOSA	17	0	0	0	0	0	0	0	17	0	---	
OKEECHOBEE	1	0	0	0	0	0	0	0	1	0	---	
ORANGE	116	35	7	14	3	6	5	10	71	0	7.4	
OSCEOLA	28	16	1	7	0	4	4	0	11	1	8.0	
PALM BEACH	91	26	5	5	0	12	4	16	48	1	6.2	
PASCO	28	2	1	1	0	0	0	0	26	0	2.6	
PINELLAS	53	4	2	1	0	1	0	0	49	0	3.7	
POLK	59	13	6	2	0	1	4	1	43	2	7.1	
PUTNAM	2	0	0	0	0	0	0	0	2	0	---	
SAINT JOHNS	7	1	0	0	0	0	1	0	6	0	9.1	
SAINT LUCIE	29	5	2	0	1	0	2	1	23	0	8.1	
SANTA ROSA	7	0	0	0	0	0	0	0	7	0	---	
SARASOTA	12	2	1	0	1	0	0	0	10	0	4.3	
SEMINOLE	26	2	1	0	0	1	0	2	22	0	2.1	
SUMTER	3	0	0	0	0	0	0	0	3	0	---	
SUWANNEE	10	0	0	0	0	0	0	0	10	0	---	
TAYLOR	0	0	0	0	0	0	0	0	0	0	---	
UNION	2	0	0	0	0	0	0	0	2	0	---	
VOLUSIA	43	8	3	4	0	0	1	0	35	0	11.0	
WAKULLA	0	0	0	0	0	0	0	0	0	0	---	
WALTON	5	0	0	0	0	0	0	0	5	0	---	
WASHINGTON	1	0	0	0	0	0	0	0	1	0	---	

TABLE F-3: RESIDENT FETAL DEATHS BY AGE OF MOTHER, BY COUNTY, FLORIDA, 2012

	AGE OF MOTHER														
	TOTAL	<13	13	14	15	16	17	18	19	20-24	25-29	30-34	35-44	45+	UNK
FLORIDA	1,530	0	0	3	6	12	17	28	63	377	365	327	313	1	18
ALACHUA	23	0	0	0	0	0	0	0	1	3	7	2	10	0	0
BAKER	5	0	0	0	0	0	0	0	0	0	0	3	2	0	0
BAY	18	0	0	0	0	3	0	1	0	4	4	4	1	0	1
BRADFORD	0	0	0	0	0	0	0	0	0	0	0	0	0	0	0
BREVARD	45	0	0	0	0	0	1	0	1	9	16	8	10	0	0
BROWARD	181	0	0	1	0	0	0	2	7	39	38	46	41	0	7
CALHOUN	0	0	0	0	0	0	0	0	0	0	0	0	0	0	0
CHARLOTTE	5	0	0	0	0	0	0	0	0	2	0	1	1	0	1
CITRUS	7	0	0	0	0	0	0	1	0	4	2	0	0	0	0
CLAY	7	0	0	0	0	0	0	1	0	1	1	2	2	0	0
COLLIER	24	0	0	0	0	0	0	1	0	3	6	4	10	0	0
COLUMBIA	11	0	0	0	1	0	0	0	0	3	2	4	1	0	0
MIAMI-DADE	215	0	0	0	2	1	2	1	6	45	46	57	50	0	5
DESOTO	3	0	0	0	0	0	0	0	0	0	1	1	0	0	0
DIXIE	1	0	0	0	0	0	0	0	0	0	1	0	0	0	0
DUVAL	98	0	0	0	0	0	1	0	6	31	22	21	16	0	1
ESCAMBIA	20	0	0	0	0	1	1	0	3	7	4	2	2	0	0
FLAGLER	6	0	0	0	0	0	0	0	0	2	2	1	1	0	0
FRANKLIN	0	0	0	0	0	0	0	0	0	0	0	0	0	0	0
GADSDEN	3	0	0	0	0	0	0	0	0	1	1	1	0	0	0
GILCHRIST	2	0	0	0	0	0	0	0	0	0	1	1	0	0	0
GLADES	0	0	0	0	0	0	0	0	0	0	0	0	0	0	0
GULF	0	0	0	0	0	0	0	0	0	0	0	0	0	0	0
HAMILTON	0	0	0	0	0	0	0	0	0	0	0	0	0	0	0
HARDEE	2	0	0	0	0	0	0	0	0	2	0	0	0	0	0
HENDRY	1	0	0	0	0	0	0	0	0	0	0	1	0	0	0
HERNANDO	8	0	0	0	0	0	1	0	1	1	3	1	1	0	0
HIGHLANDS	4	0	0	0	0	0	1	0	0	1	2	0	0	0	0
HILLSBOROUGH	116	0	0	0	0	1	0	2	4	30	33	26	20	0	0
HOLMES	3	0	0	0	0	0	0	0	1	0	1	0	1	0	0
INDIAN RIVER	7	0	0	0	0	0	0	0	0	2	1	2	2	0	0
JACKSON	2	0	0	0	0	0	0	0	0	1	0	0	1	0	0
JEFFERSON	1	0	0	0	0	0	0	0	0	0	1	0	0	0	0
LAFAYETTE	0	0	0	0	0	0	0	0	0	0	0	0	0	0	0
LAKE	20	0	0	0	0	0	0	0	0	7	3	6	4	0	0
LEE	47	0	0	0	0	0	0	0	1	16	10	5	15	0	0
LEON	29	0	0	1	0	0	1	1	2	7	6	5	6	0	0
LEVY	6	0	0	0	0	0	0	0	1	1	1	1	2	0	0
LIBERTY	0	0	0	0	0	0	0	0	0	0	0	0	0	0	0
MADISON	1	0	0	0	0	0	0	0	0	1	0	0	0	0	0
MANATEE	30	0	0	0	0	0	1	1	0	10	6	6	6	0	0
MARION	27	0	0	0	0	0	0	2	3	8	6	3	5	0	0
MARTIN	3	0	0	0	0	0	0	0	0	0	0	1	2	0	0
MONROE	3	0	0	0	0	0	0	0	0	0	1	0	2	0	0
NASSAU	4	0	0	0	0	0	0	0	1	0	2	0	1	0	0
OKALOOSA	17	0	0	0	0	0	0	1	0	6	6	2	2	0	0
OKEECHOBEE	1	0	0	0	0	0	0	0	0	1	0	0	0	0	0
ORANGE	116	0	0	1	1	0	1	4	5	35	24	30	14	0	1
OSCEOLA	28	0	0	0	0	2	3	1	0	5	6	6	5	0	0
PALM BEACH	91	0	0	0	0	2	0	2	5	22	22	14	24	0	0
PASCO	28	0	0	0	0	0	0	2	0	5	9	6	6	0	0
PINELLAS	53	0	0	0	0	1	3	2	3	10	13	13	8	0	0
POLK	59	0	0	0	0	0	0	2	4	17	17	12	7	0	0
PUTNAM	2	0	0	0	0	0	0	0	1	0	1	0	0	0	0
SAINT JOHNS	7	0	0	0	0	0	0	0	0	0	4	0	3	0	0
SAINT LUCIE	29	0	0	0	1	0	0	0	0	6	3	9	10	0	0
SANTA ROSA	7	0	0	0	0	0	0	0	0	3	4	0	0	0	0
SARASOTA	12	0	0	0	0	0	0	0	1	2	2	3	3	0	1
SEMINOLE	26	0	0	0	0	0	0	0	1	6	6	5	8	0	0
SUMTER	3	0	0	0	0	1	0	0	0	1	0	0	1	0	0
SUWANNEE	10	0	0	0	0	0	0	0	2	3	1	4	0	0	0
TAYLOR	0	0	0	0	0	0	0	0	0	0	0	0	0	0	0
UNION	2	0	0	0	0	0	0	0	0	0	1	0	1	0	0
VOLUSIA	43	0	0	0	1	0	1	1	3	13	9	8	6	1	0
WAKULLA	0	0	0	0	0	0	0	0	0	0	0	0	0	0	0
WALTON	5	0	0	0	0	0	0	0	0	0	5	0	0	0	0
WASHINGTON	1	0	0	0	0	0	0	0	0	0	1	0	0	0	0

TABLE F-4: RESIDENT AND RECORDED NEONATAL DEATHS (UNDER 28 DAYS) AND RATES PER 1,000 LIVE BIRTHS, BY RACE, BY COUNTY, FLORIDA, 2012

	RESIDENT NEONATAL DEATHS					RATES*		
	NUMBERS					TOTAL	WHITE	BLACK
	TOTAL	WHITE	BLACK	OTHER	UNK			
FLORIDA	826	457	321	47	1	3.9	3.0	6.6
ALACHUA	14	8	6	0	0	4.9	4.6	7.1
BAKER	3	3	0	0	0	8.8	10.2	0.0
BAY	11	9	1	1	0	4.8	5.1	3.0
BRADFORD	2	1	1	0	0	6.3	4.1	14.7
BREVARD	26	20	6	0	0	5.2	5.2	8.1
BROWARD	65	20	36	9	0	3.1	1.7	4.4
CALHOUN	0	0	0	0	0	0.0	0.0	0.0
CHARLOTTE	2	1	0	1	0	1.9	1.1	0.0
CITRUS	2	1	1	0	0	1.9	1.1	21.7
CLAY	8	4	2	2	0	3.9	2.4	8.4
COLLIER	10	5	5	0	0	3.2	1.9	12.7
COLUMBIA	7	6	1	0	0	9.1	10.0	6.4
MIAMI-DADE	95	49	44	2	0	3.1	2.2	5.8
DESOTO	1	1	0	0	0	2.7	3.2	0.0
DIXIE	2	2	0	0	0	12.4	13.2	0.0
DUVAL	70	22	44	3	1	5.6	3.2	9.7
ESCAMBIA	18	8	10	0	0	4.6	3.2	8.5
FLAGLER	2	2	0	0	0	2.5	3.1	0.0
FRANKLIN	1	1	0	0	0	9.2	10.1	0.0
GADSDEN	2	1	1	0	0	3.8	5.1	3.2
GILCHRIST	1	1	0	0	0	4.8	5.2	0.0
GLADES	0	0	0	0	0	0.0	0.0	0.0
GULF	1	1	0	0	0	8.5	9.4	0.0
HAMILTON	1	1	0	0	0	7.2	11.2	0.0
HARDEE	1	1	0	0	0	2.6	2.8	0.0
HENDRY	2	2	0	0	0	3.4	4.0	0.0
HERNANDO	3	1	2	0	0	2.2	0.8	17.5
HIGHLANDS	7	6	1	0	0	7.7	8.4	6.8
HILLSBOROUGH	84	51	26	7	0	5.1	4.3	7.2
HOLMES	2	2	0	0	0	10.5	11.5	0.0
INDIAN RIVER	7	1	6	0	0	5.6	1.3	25.9
JACKSON	1	1	0	0	0	2.0	3.0	0.0
JEFFERSON	1	0	1	0	0	7.2	0.0	17.5
LAFAYETTE	0	0	0	0	0	0.0	0.0	0.0
LAKE	11	4	5	2	0	3.6	1.6	11.2
LEE	22	14	6	2	0	3.4	2.7	6.6
LEON	18	7	11	0	0	6.0	4.4	9.1
LEVY	2	1	1	0	0	5.3	3.0	22.2
LIBERTY	0	0	0	0	0	0.0	0.0	0.0
MADISON	2	1	1	0	0	9.4	8.9	10.3
MANATEE	10	10	0	0	0	2.9	3.7	0.0
MARION	9	3	6	0	0	2.8	1.2	9.2
MARTIN	5	4	1	0	0	4.4	4.2	10.8
MONROE	1	1	0	0	0	1.4	1.7	0.0
NASSAU	4	4	0	0	0	5.3	5.9	0.0
OKALOOSA	9	6	1	2	0	3.5	2.9	3.5
OKEECHOBEE	1	1	0	0	0	1.9	2.2	0.0
ORANGE	80	41	32	7	0	5.1	4.1	7.6
OSCEOLA	12	8	2	2	0	3.1	2.5	4.6
PALM BEACH	40	16	22	2	0	2.9	1.8	5.5
PASCO	11	10	0	1	0	2.3	2.4	0.0
PINELLAS	28	16	11	1	0	3.3	2.5	7.5
POLK	32	22	10	0	0	4.4	4.0	7.0
PUTNAM	2	2	0	0	0	2.4	3.3	0.0
SAINT JOHNS	2	2	0	0	0	1.1	1.2	0.0
SAINT LUCIE	11	6	4	1	0	3.7	3.1	4.7
SANTA ROSA	5	5	0	0	0	2.7	3.0	0.0
SARASOTA	10	8	1	1	0	3.4	3.3	3.6
SEMINOLE	20	12	8	0	0	4.5	3.6	11.4
SUMTER	0	0	0	0	0	0.0	0.0	0.0
SUWANNEE	2	2	0	0	0	4.5	5.4	0.0
TAYLOR	0	0	0	0	0	0.0	0.0	0.0
UNION	2	1	1	0	0	11.2	6.7	41.7
VOLUSIA	15	11	4	0	0	3.2	3.0	5.2
WAKULLA	0	0	0	0	0	0.0	0.0	0.0
WALTON	5	4	0	1	0	7.5	6.7	0.0
WASHINGTON	1	1	0	0	0	4.4	5.3	0.0

*Rates based on neonatal deaths by race of decedent, live births by race of mother.

TABLE F-4 (Cont.): RESIDENT AND RECORDED NEONATAL DEATHS (UNDER 28 DAYS) AND RATES PER 1,000 LIVE BIRTHS, BY RACE, BY COUNTY, FLORIDA, 2012

	RECORDED NEONATAL DEATHS					RATES*		
	NUMBERS					TOTAL	WHITE	BLACK
	TOTAL	WHITE	BLACK	OTHER	UNK			
FLORIDA	856	471	336	48	1	4.0	3.1	6.8
ALACHUA	45	29	16	0	0	8.0	7.1	13.0
BAKER	0	0	0	0	0	0.0	0.0	0.0
BAY	9	7	1	1	0	3.3	3.2	2.8
BRADFORD	0	0	0	0	0	0.0	0.0	0.0
BREVARD	13	12	0	1	0	2.6	3.1	0.0
BROWARD	80	26	45	9	0	3.5	2.1	4.9
CALHOUN	0	0	0	0	0	0.0	0.0	---
CHARLOTTE	3	1	1	1	0	2.5	1.0	8.9
CITRUS	0	0	0	0	0	0.0	0.0	0.0
CLAY	4	1	1	2	0	1.9	0.6	2.4
COLLIER	3	1	2	0	0	0.9	0.3	4.9
COLUMBIA	6	5	1	0	0	7.4	8.8	4.6
MIAMI-DADE	100	56	42	2	0	3.6	2.7	6.8
DESOTO	0	0	0	0	0	0.0	0.0	0.0
DIXIE	0	0	0	0	0	0.0	0.0	---
DUVAL	89	38	47	3	1	6.3	4.5	10.6
ESCAMBIA	34	20	13	1	0	6.2	5.1	10.3
FLAGLER	0	0	0	0	0	0.0	0.0	0.0
FRANKLIN	0	0	0	0	0	---	---	---
GADSDEN	0	0	0	0	0	0.0	0.0	0.0
GILCHRIST	0	0	0	0	0	0.0	0.0	---
GLADES	0	0	0	0	0	---	---	---
GULF	0	0	0	0	0	0.0	0.0	---
HAMILTON	0	0	0	0	0	---	---	---
HARDEE	0	0	0	0	0	0.0	0.0	---
HENDRY	0	0	0	0	0	---	---	---
HERNANDO	1	1	0	0	0	0.6	0.7	0.0
HIGHLANDS	1	1	0	0	0	0.8	1.0	0.0
HILLSBOROUGH	114	75	31	8	0	6.1	5.5	8.0
HOLMES	0	0	0	0	0	0.0	0.0	---
INDIAN RIVER	3	0	3	0	0	2.7	0.0	14.7
JACKSON	1	1	0	0	0	2.2	3.3	0.0
JEFFERSON	0	0	0	0	0	---	---	---
LAFAYETTE	0	0	0	0	0	---	---	---
LAKE	4	1	3	0	0	1.5	0.5	6.8
LEE	23	15	6	2	0	3.5	2.8	6.6
LEON	22	8	14	0	0	4.7	3.1	7.7
LEVY	0	0	0	0	0	0.0	0.0	---
LIBERTY	0	0	0	0	0	---	---	---
MADISON	1	0	1	0	0	1,000.0	0.0	---
MANATEE	3	3	0	0	0	1.1	1.4	0.0
MARION	1	0	1	0	0	0.4	0.0	1.9
MARTIN	0	0	0	0	0	0.0	0.0	0.0
MONROE	1	1	0	0	0	2.0	2.4	0.0
NASSAU	1	1	0	0	0	1.8	2.1	0.0
OKALOOSA	8	6	0	2	0	3.2	3.1	0.0
OKEECHOBEE	0	0	0	0	0	0.0	0.0	0.0
ORANGE	141	80	51	10	0	7.0	5.9	10.8
OSCEOLA	7	3	3	1	0	1.9	1.0	7.4
PALM BEACH	58	22	32	2	0	3.4	2.1	6.9
PASCO	1	0	1	0	0	0.6	0.0	8.5
PINELLAS	40	25	14	1	0	4.0	3.3	9.3
POLK	14	10	3	1	0	2.3	2.2	2.5
PUTNAM	0	0	0	0	0	0.0	0.0	0.0
SAINT JOHNS	0	0	0	0	0	0.0	0.0	0.0
SAINT LUCIE	4	2	1	1	0	1.8	1.5	1.4
SANTA ROSA	1	1	0	0	0	2.5	2.8	0.0
SARASOTA	8	8	0	0	0	2.5	3.0	0.0
SEMINOLE	4	3	1	0	0	1.3	1.3	1.7
SUMTER	0	0	0	0	0	0.0	---	---
SUWANNEE	0	0	0	0	0	0.0	0.0	0.0
TAYLOR	0	0	0	0	0	0.0	---	0.0
UNION	0	0	0	0	0	0.0	0.0	0.0
VOLUSIA	6	4	2	0	0	1.4	1.3	2.7
WAKULLA	0	0	0	0	0	0.0	0.0	---
WALTON	4	4	0	0	0	4.3	4.8	0.0
WASHINGTON	0	0	0	0	0	0.0	---	0.0

*Rates based on neonatal deaths by race of decedent, live births by race of mother.

TABLE F-5: RESIDENT AND RECORDED INFANT DEATHS (UNDER 1 YEAR) AND RATES PER 1,000 LIVE BIRTHS, BY RACE, BY COUNTY, FLORIDA, 2012

	RESIDENT INFANT DEATHS					RATES*		
	NUMBERS					TOTAL	WHITE	BLACK
	TOTAL	WHITE	BLACK	OTHER	UNK			
FLORIDA	1285	687	523	73	2	6.0	4.6	10.7
ALACHUA	20	10	10	0	0	6.9	5.7	11.8
BAKER	3	3	0	0	0	8.8	10.2	0.0
BAY	17	12	2	3	0	7.4	6.8	6.1
BRADFORD	4	3	1	0	0	12.6	12.2	14.7
BREVARD	33	23	8	2	0	6.6	5.9	10.8
BROWARD	111	39	63	9	0	5.2	3.4	7.6
CALHOUN	0	0	0	0	0	0.0	0.0	0.0
CHARLOTTE	3	2	0	1	0	2.9	2.2	0.0
CITRUS	3	2	1	0	0	2.9	2.1	21.7
CLAY	11	6	3	2	0	5.3	3.5	12.7
COLLIER	13	8	5	0	0	4.1	3.0	12.7
COLUMBIA	10	8	2	0	0	12.9	13.3	12.8
MIAMI-DADE	149	68	76	5	0	4.9	3.1	10.1
DESOTO	1	1	0	0	0	2.7	3.2	0.0
DIXIE	2	2	0	0	0	12.4	13.2	0.0
DUVAL	104	33	64	6	1	8.3	4.9	14.1
ESCAMBIA	31	14	15	2	0	7.9	5.5	12.8
FLAGLER	6	5	1	0	0	7.5	7.8	9.4
FRANKLIN	1	1	0	0	0	9.2	10.1	0.0
GADSDEN	5	1	4	0	0	9.5	5.1	12.6
GILCHRIST	2	2	0	0	0	9.7	10.3	0.0
GLADES	1	1	0	0	0	14.5	17.5	0.0
GULF	1	1	0	0	0	8.5	9.4	0.0
HAMILTON	1	1	0	0	0	7.2	11.2	0.0
HARDEE	2	2	0	0	0	5.1	5.6	0.0
HENDRY	3	3	0	0	0	5.1	6.1	0.0
HERNANDO	9	5	2	2	0	6.5	4.1	17.5
HIGHLANDS	11	8	3	0	0	12.1	11.2	20.3
HILLSBOROUGH	124	70	46	8	0	7.6	5.9	12.8
HOLMES	4	4	0	0	0	20.9	23.0	0.0
INDIAN RIVER	12	3	9	0	0	9.6	3.9	38.8
JACKSON	3	1	2	0	0	6.0	3.0	14.1
JEFFERSON	1	0	1	0	0	7.2	0.0	17.5
LAFAYETTE	0	0	0	0	0	0.0	0.0	0.0
LAKE	19	11	6	2	0	6.2	4.5	13.5
LEE	39	26	11	2	0	6.1	5.0	12.1
LEON	28	9	19	0	0	9.3	5.6	15.7
LEVY	2	1	1	0	0	5.3	3.0	22.2
LIBERTY	0	0	0	0	0	0.0	0.0	0.0
MADISON	2	1	1	0	0	9.4	8.9	10.3
MANATEE	23	19	4	0	0	6.7	7.1	8.9
MARION	20	7	9	3	1	6.1	2.8	13.8
MARTIN	8	5	3	0	0	7.1	5.2	32.3
MONROE	1	1	0	0	0	1.4	1.7	0.0
NASSAU	6	6	0	0	0	8.0	8.8	0.0
OKALOOSA	12	8	1	3	0	4.6	3.8	3.5
OKEECHOBEE	2	1	1	0	0	3.8	2.2	32.3
ORANGE	109	52	49	8	0	6.9	5.2	11.6
OSCEOLA	17	13	2	2	0	4.4	4.1	4.6
PALM BEACH	63	22	37	4	0	4.5	2.4	9.2
PASCO	20	17	1	2	0	4.2	4.0	3.6
PINELLAS	41	24	16	1	0	4.9	3.8	10.9
POLK	59	43	16	0	0	8.1	7.9	11.2
PUTNAM	4	3	1	0	0	4.9	4.9	5.6
SAINT JOHNS	3	3	0	0	0	1.6	1.8	0.0
SAINT LUCIE	15	7	7	1	0	5.1	3.6	8.3
SANTA ROSA	9	8	0	1	0	4.8	4.8	0.0
SARASOTA	13	11	1	1	0	4.5	4.5	3.6
SEMINOLE	30	17	12	1	0	6.8	5.0	17.1
SUMTER	0	0	0	0	0	0.0	0.0	0.0
SUWANNEE	3	2	1	0	0	6.7	5.4	16.1
TAYLOR	1	1	0	0	0	4.5	6.0	0.0
UNION	2	1	1	0	0	11.2	6.7	41.7
VOLUSIA	18	13	5	0	0	3.8	3.5	6.5
WAKULLA	0	0	0	0	0	0.0	0.0	0.0
WALTON	11	9	0	2	0	18.5	15.0	0.0
WASHINGTON	2	2	0	0	0	8.7	10.7	0.0

*Rates based on infant deaths by race of decedent, live births by race of mother.

TABLE F-5 (Cont.): RESIDENT AND RECORDED INFANT DEATHS (UNDER 1 YEAR) AND RATES PER 1,000 LIVE BIRTHS, BY RACE, BY COUNTY, FLORIDA, 2012

	RECORDED INFANT DEATHS					RATES*		
	NUMBERS							
	TOTAL	WHITE	BLACK	OTHER	UNK	TOTAL	WHITE	BLACK
FLORIDA	1319	702	540	75	2	6.2	4.6	11.0
ALACHUA	59	34	23	1	1	10.5	8.4	18.7
BAKER	0	0	0	0	0	0.0	0.0	0.0
BAY	14	9	2	3	0	5.1	4.1	5.6
BRADFORD	2	2	0	0	0	666.7	1,000.0	0.0
BREVARD	17	15	1	1	0	3.5	3.9	1.4
BROWARD	119	39	70	10	0	5.2	3.2	7.5
CALHOUN	0	0	0	0	0	0.0	0.0	---
CHARLOTTE	4	2	1	1	0	3.4	2.0	8.9
CITRUS	1	1	0	0	0	1.1	1.2	0.0
CLAY	9	5	2	2	0	4.2	3.1	4.9
COLLIER	4	2	2	0	0	1.2	0.7	4.9
COLUMBIA	8	6	2	0	0	9.9	10.5	9.2
MIAMI-DADE	169	85	80	4	0	6.1	4.1	12.9
DESOTO	0	0	0	0	0	0.0	0.0	---
DIXIE	0	0	0	0	0	0.0	0.0	---
DUVAL	127	53	67	6	1	9.0	6.3	15.1
ESCAMBIA	49	28	18	3	0	9.0	7.2	14.2
FLAGLER	2	1	1	0	0	285.7	200.0	1,000.0
FRANKLIN	0	0	0	0	0	---	---	---
GADSDEN	2	0	2	0	0	400.0	0.0	2,000.0
GILCHRIST	0	0	0	0	0	0.0	0.0	---
GLADES	0	0	0	0	0	---	---	---
GULF	0	0	0	0	0	0.0	0.0	---
HAMILTON	0	0	0	0	0	---	---	---
HARDEE	0	0	0	0	0	0.0	0.0	---
HENDRY	0	0	0	0	0	---	---	---
HERNANDO	4	2	0	2	0	2.3	1.3	0.0
HIGHLANDS	6	4	2	0	0	5.0	4.1	12.1
HILLSBOROUGH	166	98	59	9	0	9.0	7.2	15.3
HOLMES	2	2	0	0	0	2,000.0	2,000.0	---
INDIAN RIVER	6	2	4	0	0	5.3	3.0	19.6
JACKSON	3	1	2	0	0	6.5	3.3	15.2
JEFFERSON	0	0	0	0	0	---	---	---
LAFAYETTE	0	0	0	0	0	---	---	---
LAKE	9	6	3	0	0	3.3	2.8	6.8
LEE	39	28	9	2	0	5.9	5.2	10.0
LEON	32	8	23	1	0	6.9	3.1	12.7
LEVY	0	0	0	0	0	0.0	0.0	---
LIBERTY	0	0	0	0	0	---	---	---
MADISON	1	0	1	0	0	1,000.0	0.0	---
MANATEE	12	8	4	0	0	4.2	3.7	10.7
MARION	8	4	2	2	0	3.2	2.1	3.8
MARTIN	2	0	2	0	0	1.2	0.0	12.4
MONROE	1	1	0	0	0	2.0	2.4	0.0
NASSAU	1	1	0	0	0	1.8	2.1	0.0
OKALOOSA	12	9	0	3	0	4.9	4.6	0.0
OKEECHOBEE	0	0	0	0	0	0.0	0.0	0.0
ORANGE	191	102	74	15	0	9.5	7.5	15.6
OSCEOLA	11	7	3	1	0	3.0	2.3	7.4
PALM BEACH	77	27	46	4	0	4.7	2.5	10.0
PASCO	6	4	1	1	0	3.5	2.7	8.5
PINELLAS	66	46	19	1	0	6.7	6.0	12.6
POLK	26	22	3	1	0	4.3	4.9	2.5
PUTNAM	2	1	1	0	0	4.3	3.1	7.6
SAINT JOHNS	0	0	0	0	0	0.0	0.0	0.0
SAINT LUCIE	9	4	4	1	0	4.1	2.9	5.8
SANTA ROSA	3	3	0	0	0	7.5	8.3	0.0
SARASOTA	10	10	0	0	0	3.1	3.7	0.0
SEMINOLE	7	4	3	0	0	2.3	1.7	5.2
SUMTER	1	0	0	1	0	1,000.0	---	---
SUWANNEE	1	0	1	0	0	200.0	0.0	500.0
TAYLOR	1	1	0	0	0	1,000.0	---	0.0
UNION	0	0	0	0	0	0.0	0.0	0.0
VOLUSIA	10	7	3	0	0	2.4	2.2	4.0
WAKULLA	0	0	0	0	0	0.0	0.0	---
WALTON	8	8	0	0	0	8.6	9.5	0.0
WASHINGTON	0	0	0	0	0	0.0	---	0.0

*Rates based on infant deaths by race of decedent, live births by race of mother.

TABLE F-6: RESIDENT INFANT DEATHS AND RATE BY HISPANIC OR HAITIAN ORIGIN, BY COUNTY, FLORIDA, 2012

	NUMBERS										RATE
	HISPANIC ORIGIN										TOTAL HISPANIC
	TOTAL	TOTAL HISPANIC	MEXICAN	PUERTO RICAN	CUBAN	CENTRAL/ SOUTH AMERICAN	OTHER/ UNK HISPANIC	HAITIAN	NON- HISPANIC/ HAITIAN	UNK	
FLORIDA	1,285	292	64	79	41	49	59	57	914	22	5.1
ALACHUA	20	2	0	1	0	0	1	0	18	0	9.4
BAKER	3	0	0	0	0	0	0	0	3	0	---
BAY	17	3	1	2	0	0	0	0	14	0	20.0
BRADFORD	4	0	0	0	0	0	0	0	4	0	---
BREVARD	33	6	0	1	0	3	2	0	27	0	10.9
BROWARD	111	28	2	5	6	8	7	13	70	0	4.6
CALHOUN	0	0	0	0	0	0	0	0	0	0	---
CHARLOTTE	3	0	0	0	0	0	0	1	2	0	---
CITRUS	3	1	0	1	0	0	0	0	2	0	14.1
CLAY	11	1	0	1	0	0	0	0	9	1	5.3
COLLIER	13	5	1	0	1	0	3	2	6	0	3.4
COLUMBIA	10	0	0	0	0	0	0	0	10	0	---
MIAMI-DADE	149	57	1	8	21	14	13	16	70	6	3.2
DESOTO	1	1	1	0	0	0	0	0	0	0	6.7
DIXIE	2	0	0	0	0	0	0	0	2	0	---
DUVAL	104	8	3	2	0	0	3	0	93	3	7.1
ESCAMBIA	31	1	1	0	0	0	0	0	30	0	4.6
FLAGLER	6	1	0	0	0	1	0	0	5	0	9.8
FRANKLIN	1	0	0	0	0	0	0	0	1	0	---
GADSDEN	5	0	0	0	0	0	0	0	5	0	---
GILCHRIST	2	0	0	0	0	0	0	0	2	0	---
GLADES	1	0	0	0	0	0	0	0	1	0	---
GULF	1	0	0	0	0	0	0	0	1	0	---
HAMILTON	1	1	1	0	0	0	0	0	0	0	40.0
HARDEE	2	0	0	0	0	0	0	0	2	0	---
HENDRY	3	3	2	0	1	0	0	0	0	0	8.8
HERNANDO	9	0	0	0	0	0	0	0	9	0	---
HIGHLANDS	11	2	1	0	0	0	1	1	8	0	8.3
HILLSBOROUGH	124	49	13	15	7	8	6	1	72	2	10.3
HOLMES	4	0	0	0	0	0	0	0	4	0	---
INDIAN RIVER	12	0	0	0	0	0	0	0	12	0	---
JACKSON	3	0	0	0	0	0	0	0	3	0	---
JEFFERSON	1	0	0	0	0	0	0	0	1	0	---
LAFAYETTE	0	0	0	0	0	0	0	0	0	0	---
LAKE	19	2	2	0	0	0	0	0	17	0	3.6
LEE	39	13	4	6	1	0	2	2	24	0	6.8
LEON	28	2	1	1	0	0	0	0	26	0	13.5
LEVY	2	0	0	0	0	0	0	0	2	0	---
LIBERTY	0	0	0	0	0	0	0	0	0	0	---
MADISON	2	1	0	0	1	0	0	0	1	0	125.0
MANATEE	23	9	5	2	0	1	1	0	14	0	8.9
MARION	20	3	0	2	0	0	1	0	16	1	6.1
MARTIN	8	2	1	0	0	0	1	0	6	0	5.6
MONROE	1	0	0	0	0	0	0	0	1	0	---
NASSAU	6	0	0	0	0	0	0	0	6	0	---
OKALOOSA	12	2	1	0	0	0	1	0	10	0	7.4
OKEECHOBEE	2	1	1	0	0	0	0	0	1	0	5.3
ORANGE	109	24	3	9	1	5	6	7	77	1	5.1
OSCEOLA	17	12	1	4	0	4	3	0	5	0	6.0
PALM BEACH	63	9	4	1	1	0	3	13	39	2	2.2
PASCO	20	5	1	1	1	0	2	0	14	1	6.6
PINELLAS	41	4	1	0	0	1	2	0	36	1	3.8
POLK	59	16	8	7	0	1	0	1	40	2	8.8
PUTNAM	4	0	0	0	0	0	0	0	3	1	---
SAINT JOHNS	3	0	0	0	0	0	0	0	3	0	---
SAINT LUCIE	15	2	2	0	0	0	0	0	13	0	3.3
SANTA ROSA	9	0	0	0	0	0	0	0	9	0	---
SARASOTA	13	4	1	2	0	1	0	0	9	0	8.7
SEMINOLE	30	6	0	4	0	1	1	0	23	1	6.4
SUMTER	0	0	0	0	0	0	0	0	0	0	---
SUWANNEE	3	0	0	0	0	0	0	0	3	0	---
TAYLOR	1	0	0	0	0	0	0	0	1	0	---
UNION	2	0	0	0	0	0	0	0	2	0	---
VOLUSIA	18	4	1	2	0	1	0	0	14	0	5.5
WAKULLA	0	0	0	0	0	0	0	0	0	0	---
WALTON	11	1	0	1	0	0	0	0	10	0	13.3
WASHINGTON	2	0	0	0	0	0	0	0	2	0	---

TABLE F-7: RESIDENT INFANT, NEONATAL AND POST-NEONATAL DEATHS FROM SELECTED CAUSES*
BY RACE, FLORIDA, 2012

	TOTAL				POST NEO- NATAL	WHITE			POST NEO- NATAL
	NEONATAL		POST NEO- NATAL	NEONATAL		POST NEO- NATAL			
	<1 DAY	1-27 DAYS		<1 DAY			1-27 DAYS		
INFANT	1,285	507	319	459	INFANT	687	268	189	230
TOTAL									
Intestinal Infectious Disease	2	0	1	1	2	0	1	1	
Diarrhea & Gastroenteritis—Infectious Origin	25	0	0	25	11	0	0	11	
Tuberculosis	0	0	0	0	0	0	0	0	
Tetanus	0	0	0	0	0	0	0	0	
Diphtheria	0	0	0	0	0	0	0	0	
Whooping Cough	1	0	0	1	1	0	0	1	
Meningococcal Infection	0	0	0	0	0	0	0	0	
Septicemia	15	0	0	15	6	0	0	6	
Congenital Syphilis	0	0	0	0	0	0	0	0	
Gonococcal Infection	0	0	0	0	0	0	0	0	
Acute Poliomyelitis	0	0	0	0	0	0	0	0	
Varicella (Chicken Pox)	0	0	0	0	0	0	0	0	
Measles	0	0	0	0	0	0	0	0	
HIV Disease	0	0	0	0	0	0	0	0	
Mumps	0	0	0	0	0	0	0	0	
Other & Unspec Viral Diseases	6	0	0	6	1	0	0	1	
Candidiasis	1	0	0	1	0	0	0	0	
Malaria	0	0	0	0	0	0	0	0	
Pneumocystosis	0	0	0	0	0	0	0	0	
Other & Unspecified Infectious & Parasitic Diseases	1	0	0	1	1	0	0	1	
Hodgkins Disease & Non-Hodgkins Lymphomas	0	0	0	0	0	0	0	0	
Leukemia	2	0	0	2	2	0	0	2	
Other & Unspecified Malignant Neoplasm	2	1	1	0	1	0	1	0	
In Situ/Benign/Malignant Neoplasms Uncert/Unk Behavior	3	0	1	2	2	0	0	2	
Anemias	0	0	0	0	0	0	0	0	
Blood, Blood-Forming, Hemorrhagic Diseases	2	0	2	0	2	0	2	0	
Disorders Involving Immune Mechanism	0	0	0	0	0	0	0	0	
Short Stature	0	0	0	0	0	0	0	0	
Nutritional Deficiencies	0	0	0	0	0	0	0	0	
Cystic Fibrosis	0	0	0	0	0	0	0	0	
Fluid/Electrolyte/Acid-Base/Volume Depletion Disorders	3	0	2	1	2	0	1	1	
Other Endocrine, Nutritional, Metabolic Diseases	7	1	4	2	4	0	2	2	
Meningitis	1	0	0	1	1	0	0	1	
Infantile Spinal Muscular Atrophy, Type 1 (Werdnig-Hoffman)	0	0	0	0	0	0	0	0	
Infantile Cerebral Palsy	0	0	0	0	0	0	0	0	
Anoxic Brain Damage	3	0	0	3	0	0	0	0	
Other Nervous System Diseases	9	0	2	7	3	0	1	2	
Ear & Mastoid Process Diseases	0	0	0	0	0	0	0	0	
Pulmonary Heart/Circulation Diseases	5	0	1	4	3	0	1	2	
Pericarditis, Endocarditis, Myocarditis	1	0	0	1	0	0	0	0	
Cardiomyopathy	12	1	2	9	8	1	1	6	
Cardiac Arrest	0	0	0	0	0	0	0	0	
Cerebrovascular Diseases	7	0	1	6	3	0	1	2	
Other Circulatory System Diseases	11	0	2	9	7	0	1	6	
Acute Upper Respiratory Infections	0	0	0	0	0	0	0	0	
Influenza	0	0	0	0	0	0	0	0	
Pneumonia	4	0	0	4	3	0	0	3	

TABLE F-7 (Cont.): RESIDENT INFANT, NEONATAL AND POST-NEONATAL DEATHS FROM SELECTED CAUSES*, BY RACE, FLORIDA, 2012

	TOTAL				WHITE			
	NEONATAL			POST NEO- NATAL	NEONATAL			POST NEO- NATAL
	INFANT <1 DAY	1-27 DAYS			INFANT <1 DAY	1-27 DAYS		
Acute Bronchitis & Acute Bronchiolitis	3	0	0	3	1	0	0	1
Bronchitis, Chronic & Unspecified	1	0	0	1	0	0	0	0
Asthma	0	0	0	0	0	0	0	0
Pneumonitis Due to Solids & Liquids	0	0	0	0	0	0	0	0
Other & Unspecified Respiratory System Diseases	25	0	0	25	15	0	0	15
Gastritis, Duodenitis, Noninfective Enteritis/Colitis	2	0	1	1	1	0	1	0
Hernia Abdom Cavity & Intestinal Obstruct W/O Hernia	1	0	1	0	1	0	1	0
Other & Unspec Digestive System Disease	2	0	0	2	1	0	0	1
Renal Failure & Other Kidney Disorders	6	0	5	1	4	0	3	1
Other & Unspec Genitourinary System Dis	1	1	0	0	1	1	0	0
PERINATAL PERIOD CONDITIONS	641	425	196	20	333	219	106	8
Maternal Hypertensive Disorders	1	1	0	0	1	1	0	0
Maternal Conditions Unrelated Present Pregnancy	6	6	0	0	3	3	0	0
Incompetent Cervix	31	30	1	0	15	14	1	0
Premature Rupture of Membranes	61	57	4	0	31	30	1	0
Multiple Pregnancy	11	9	2	0	7	5	2	0
Maternal Complications of Pregnancy	10	10	0	0	5	5	0	0
Placenta Complications	25	20	5	0	17	14	3	0
Cord Complications	2	1	1	0	1	0	1	0
Chorioamnionitis	29	27	2	0	17	16	1	0
Other & Unspecified Membrane Abnormalities	0	0	0	0	0	0	0	0
Other Complications of Labor & Delivery	5	3	2	0	2	0	2	0
Noxious Influences Via Placenta or Breast Milk	1	1	0	0	1	1	0	0
Slow Fetal Growth & Fetal Malnutrition	1	0	0	1	1	0	0	1
Extreme Low Birth Weight or Extreme Immaturity	143	125	14	4	64	55	9	0
Other Low Birth Weight or Preterm	65	62	1	2	41	38	1	2
Long Gestation & High Birth Weight	0	0	0	0	0	0	0	0
Birth Trauma	0	0	0	0	0	0	0	0
Intrauterine Hypoxia	8	2	6	0	4	0	4	0
Birth Asphyxia	6	1	4	1	3	0	3	0
Respiratory Distress	29	7	22	0	12	4	8	0
Congenital Pneumonia	2	0	2	0	2	0	2	0
Neonatal Aspiration Syndromes	3	0	2	1	3	0	2	1
Interstitial Emphysema & Related Conditions	2	0	2	0	1	0	1	0
Pulmonary Hemorrhage	7	0	6	1	3	0	2	1
Chronic Respiratory Disease	4	0	0	4	2	0	0	2
Atelectasis	13	8	4	1	5	4	1	0
Other Respiratory Conditions	2	2	0	0	1	1	0	0
Bacterial Sepsis	36	7	29	0	17	3	14	0
Omphalitis With or Without Hemorrhage	0	0	0	0	0	0	0	0
All Other Infections	10	2	8	0	7	1	6	0
Neonatal Hemorrhage	30	7	23	0	17	4	13	0
Hemorrhagic Disease of Newborn	0	0	0	0	0	0	0	0
Hemolytic Dis Due to Isoimmunization/Perinat Jaundice	0	0	0	0	0	0	0	0
Hematological Disorders	6	1	5	0	3	0	3	0
Diabetes Mellitus, Maternal or Neonatal	0	0	0	0	0	0	0	0
Necrotizing Enterocolitis	20	0	17	3	9	0	9	0
Hydrops Fetalis Not Due To Hemolytic Dis	5	4	1	0	3	3	0	0

TABLE F-7 (Cont.): RESIDENT INFANT, NEONATAL AND POST-NEONATAL DEATHS FROM SELECTED CAUSES*, BY RACE, FLORIDA, 2012

	TOTAL			POST NEO- NATAL	WHITE			POST NEO- NATAL
	NEONATAL		INFANT		NEONATAL		INFANT	
	<1 DAY	1-27 DAYS			<1 DAY	1-27 DAYS		
Other Perinatal Conditions	67	32	33	2	35	17	17	1
CONGENITAL / CHROMOSOMAL ANOMALIES	232	75	73	84	143	46	52	45
Anencephaly & Similar Anomalies	12	7	3	2	10	6	3	1
Congenital Hydrocephalus	4	0	1	3	4	0	1	3
Spina Bifida	0	0	0	0	0	0	0	0
Other Cong Malf Nervous System	19	7	6	6	10	3	4	3
Congenital Malf of Heart	53	7	18	28	34	4	15	15
Other Congenital Malf of Circulatory Sys	8	0	2	4	4	0	2	2
Congenital Malf of Respiratory Sys	16	9	4	3	10	5	3	2
Congenital Anomalies of Digestive Sys	3	0	0	3	0	0	0	0
Congenital Malf of Genitourinary Sys	23	16	6	1	13	9	3	1
Congenital Malf of Musculoskeletal Sys	23	6	8	9	17	3	7	7
Downs Syndrome	4	1	1	2	2	1	0	1
Edwards Syndrome	25	5	9	11	10	3	3	4
Patau Syndrome	14	3	8	3	8	3	4	1
Other Congenital Malf	22	13	4	5	14	8	4	2
Other Chromosomal Abnorm	8	1	3	4	7	1	3	3
Sudden Infant Death Syndrome	54	0	4	50	25	0	2	23
Symptoms, Signs, Abn Clinical/Lab Findings	69	1	9	59	28	0	3	23
All Other Diseases	0	0	0	0	0	0	0	0
Unint Inj: Motor Vehicle	4	1	1	2	3	1	0	2
Unint Inj: Other & Unspecified Transport	0	0	0	0	0	0	0	0
Unint Inj: Falls	0	0	0	0	0	0	0	0
Unint Inj: Firearms Discharge	1	0	0	1	0	0	0	0
Unint Inj: Drowning & Submersion	8	0	0	8	5	0	0	5
Unint Inj: Suffocation & Strangulation In Bed	37	0	4	33	23	0	3	20
Unint Inj: Other Suffocation & Strangulation	41	0	3	38	22	0	3	19
Unint Inj: Inhale/Ingest-Respiratory Tract Obstruction	6	0	0	6	5	0	0	5
Unint Inj: Smoke, Fire, Flames Exposure	0	0	0	0	0	0	0	0
Unint Inj: Poisoning & Noxious Substance Exposure	0	0	0	0	0	0	0	0
Unint Inj: Other & Unspecified	1	0	0	1	0	0	0	0
Homicide: Hanging, Strangulation, Suffocation	0	0	0	0	0	0	0	0
Homicide: Firearms Discharge	2	1	0	1	0	0	0	0
Homicide: Neglect, Abandonment, Maltreatment	7	0	0	7	4	0	0	4
Homicide: Other & Unspecified Means	13	0	3	10	8	0	3	5
Medical & Surgical Care Complications	1	0	0	1	1	0	0	1
Other External Causes	4	0	0	4	2	0	0	2

* ICD-10 codes associated with each cause of death group are presented on pages (xiv-xvi).

TABLE F-7 (Cont.): RESIDENT INFANT, NEONATAL AND POST-NEONATAL DEATHS FROM SELECTED CAUSES*, BY RACE, FLORIDA, 2012

	BLACK			POST NEO- NATAL	OTHER			POST NEO- NATAL
	NEONATAL		INFANT		NEONATAL		INFANT	
	<1 DAY	1-27 DAYS			<1 DAY	1-27 DAYS		
TOTAL	523	206	115	202	73	32	15	26
Intestinal Infectious Disease	0	0	0	0	0	0	0	0
Diarrhea & Gastroenteritis—Infectious Origin	12	0	0	12	2	0	0	2
Tuberculosis	0	0	0	0	0	0	0	0
Tetanus	0	0	0	0	0	0	0	0
Diphtheria	0	0	0	0	0	0	0	0
Whooping Cough	0	0	0	0	0	0	0	0
Meningococcal Infection	0	0	0	0	0	0	0	0
Septicemia	9	0	0	9	0	0	0	0
Congenital Syphilis	0	0	0	0	0	0	0	0
Gonococcal Infection	0	0	0	0	0	0	0	0
Acute Poliomyelitis	0	0	0	0	0	0	0	0
Varicella (Chicken Pox)	0	0	0	0	0	0	0	0
Measles	0	0	0	0	0	0	0	0
HIV Disease	0	0	0	0	0	0	0	0
Mumps	0	0	0	0	0	0	0	0
Other & Unspec Viral Diseases	4	0	0	4	1	0	0	1
Candidiasis	1	0	0	1	0	0	0	0
Malaria	0	0	0	0	0	0	0	0
Pneumocystosis	0	0	0	0	0	0	0	0
Other & Unspecified Infectious & Parasitic Diseases	0	0	0	0	0	0	0	0
Hodgkins Disease & Non-Hodgkins Lymphomas	0	0	0	0	0	0	0	0
Leukemia	0	0	0	0	0	0	0	0
Other & Unspecified Malignant Neoplasm	1	1	0	0	0	0	0	0
In Situ/Benign/Malignant Neoplasms Uncert/Unk Behavior	1	0	1	0	0	0	0	0
Anemias	0	0	0	0	0	0	0	0
Blood, Blood-Forming, Hemorrhagic Diseases	0	0	0	0	0	0	0	0
Disorders Involving Immune Mechanism	0	0	0	0	0	0	0	0
Short Stature	0	0	0	0	0	0	0	0
Nutritional Deficiencies	0	0	0	0	0	0	0	0
Cystic Fibrosis	0	0	0	0	0	0	0	0
Fluid/Electrolyte/Acid-Base/Volume Depletion Disorders	1	0	1	0	0	0	0	0
Other Endocrine, Nutritional, Metabolic Diseases	3	1	2	0	0	0	0	0
Meningitis	0	0	0	0	0	0	0	0
Infantile Spinal Muscular Atrophy, Type 1 (Werdnig-Hoffman)	0	0	0	0	0	0	0	0
Infantile Cerebral Palsy	0	0	0	0	0	0	0	0
Anoxic Brain Damage	3	0	0	3	0	0	0	0
Other Nervous System Diseases	5	0	1	4	1	0	0	1
Ear & Mastoid Process Diseases	0	0	0	0	0	0	0	0
Pulmonary Heart/Circulation Diseases	2	0	0	2	0	0	0	0
Pericarditis, Endocarditis, Myocarditis	1	0	0	1	0	0	0	0
Cardiomyopathy	3	0	1	2	1	0	0	1
Cardiac Arrest	0	0	0	0	0	0	0	0
Cerebrovascular Diseases	3	0	0	3	1	0	0	1
Other Circulatory System Diseases	3	0	1	2	1	0	0	1
Acute Upper Respiratory Infections	0	0	0	0	0	0	0	0
Influenza	0	0	0	0	0	0	0	0
Pneumonia	1	0	0	1	0	0	0	0

TABLE F-7 (Cont.): RESIDENT INFANT, NEONATAL AND POST-NEONATAL DEATHS FROM SELECTED CAUSES*,
BY RACE, FLORIDA, 2012

	BLACK			POST NEO- NATAL	OTHER			POST NEO- NATAL
	NEONATAL		INFANT		NEONATAL		INFANT	
	<1 DAY	1-27 DAYS			<1 DAY	1-27 DAYS		
Acute Bronchitis & Acute Bronchiolitis	2	0	0	2	0	0	0	0
Bronchitis, Chronic & Unspecified	1	0	0	1	0	0	0	0
Asthma	0	0	0	0	0	0	0	0
Pneumonitis Due to Solids & Liquids	0	0	0	0	0	0	0	0
Other & Unspecified Respiratory System Diseases	10	0	0	10	0	0	0	0
Gastritis, Duodenitis, Noninfective Enteritis/Colitis	1	0	0	1	0	0	0	0
Hernia Abdom Cavity & Intestinal Obstruct W/O Hernia	0	0	0	0	0	0	0	0
Other & Unspec Digestive System Disease	1	0	0	1	0	0	0	0
Renal Failure & Other Kidney Disorders	2	0	2	0	0	0	0	0
Other & Unspec Genitourinary System Dis	0	0	0	0	0	0	0	0
PERINATAL PERIOD CONDITIONS	265	178	77	10	42	27	13	2
Maternal Hypertensive Disorders	0	0	0	0	0	0	0	0
Maternal Conditions Unrelated Present Pregnancy	2	2	0	0	1	1	0	0
Incompetent Cervix	15	15	0	0	1	1	0	0
Premature Rupture of Membranes	23	20	3	0	7	7	0	0
Multiple Pregnancy	3	3	0	0	1	1	0	0
Maternal Complications of Pregnancy	5	5	0	0	0	0	0	0
Placenta Complications	7	6	1	0	1	0	1	0
Cord Complications	1	1	0	0	0	0	0	0
Chorioamnionitis	12	11	1	0	0	0	0	0
Other & Unspecified Membrane Abnormalities	0	0	0	0	0	0	0	0
Other Complications of Labor & Delivery	2	2	0	0	1	1	0	0
Noxious Influences Via Placenta or Breast Milk	0	0	0	0	0	0	0	0
Slow Fetal Growth & Fetal Malnutrition	0	0	0	0	0	0	0	0
Extreme Low Birth Weight or Extreme Immaturity	72	63	5	4	7	7	0	0
Other Low Birth Weight or Preterm	20	20	0	0	3	3	0	0
Long Gestation & High Birth Weight	0	0	0	0	0	0	0	0
Birth Trauma	0	0	0	0	0	0	0	0
Intrauterine Hypoxia	4	2	2	0	0	0	0	0
Birth Asphyxia	3	1	1	1	0	0	0	0
Respiratory Distress	14	3	11	0	3	0	3	0
Congenital Pneumonia	0	0	0	0	0	0	0	0
Neonatal Aspiration Syndromes	0	0	0	0	0	0	0	0
Interstitial Emphysema & Related Conditions	1	0	1	0	0	0	0	0
Pulmonary Hemorrhage	3	0	3	0	1	0	1	0
Chronic Respiratory Disease	1	0	0	1	1	0	0	1
Atelectasis	5	3	1	1	3	1	2	0
Other Respiratory Conditions	1	1	0	0	0	0	0	0
Bacterial Sepsis	15	2	13	0	4	2	2	0
Omphalitis With or Without Hemorrhage	0	0	0	0	0	0	0	0
All Other Infections	2	0	2	0	1	1	0	0
Neonatal Hemorrhage	12	3	9	0	1	0	1	0
Hemorrhagic Disease of Newborn	0	0	0	0	0	0	0	0
Hemolytic Dis Due to Isoimmunization/Perinat Jaundice	0	0	0	0	0	0	0	0
Hematological Disorders	3	1	2	0	0	0	0	0
Diabetes Mellitus, Maternal or Neonatal	0	0	0	0	0	0	0	0
Necrotizing Enterocolitis	9	0	7	2	2	0	1	1
Hydrops Fetalis Not Due To Hemolytic Dis	1	1	0	0	1	0	1	0

TABLE F-7 (Cont.): RESIDENT INFANT, NEONATAL AND POST-NEONATAL DEATHS FROM SELECTED CAUSES*, BY RACE, FLORIDA, 2012

	BLACK			POST NEO- NATAL	OTHER			POST NEO- NATAL
	NEONATAL		INFANT		NEONATAL		INFANT	
	<1 DAY	1-27 DAYS			<1 DAY	1-27 DAYS		
Other Perinatal Conditions	29	13	15	1	3	2	1	0
CONGENITAL / CHROMOSOMAL ANOMALIES	78	24	20	34	10	5	1	4
Anencephaly & Similar Anomalies	2	1	0	1	0	0	0	0
Congenital Hydrocephalus	0	0	0	0	0	0	0	0
Spina Bifida	0	0	0	0	0	0	0	0
Other Cong Malf Nervous System	7	4	2	1	1	0	0	1
Congenital Malf of Heart	19	3	3	13	0	0	0	0
Other Congenital Malf of Circulatory Sys	1	0	0	1	1	0	0	1
Congenital Malf of Respiratory Sys	4	2	1	1	2	2	0	0
Congenital Anomalies of Digestive Sys	3	0	0	3	0	0	0	0
Congenital Malf of Genitourinary Sys	9	6	3	0	1	1	0	0
Congenital Malf of Musculoskeletal Sys	4	2	1	1	2	1	0	1
Downs Syndrome	2	0	1	1	0	0	0	0
Edwards Syndrome	12	1	5	6	3	1	1	1
Patau Syndrome	6	0	4	2	0	0	0	0
Other Congenital Malf	8	5	0	3	0	0	0	0
Other Chromosomal Abnorm	1	0	0	1	0	0	0	0
Sudden Infant Death Syndrome	27	0	1	26	2	0	1	1
Symptoms, Signs, Abn Clinical/Lab Findings	41	1	6	34	2	0	0	2
All Other Diseases	0	0	0	0	0	0	0	0
Unint Inj: Motor Vehicle	1	0	1	0	0	0	0	0
Unint Inj: Other & Unspecified Transport	0	0	0	0	0	0	0	0
Unint Inj: Falls	0	0	0	0	0	0	0	0
Unint Inj: Firearms Discharge	1	0	0	1	0	0	0	0
Unint Inj: Drowning & Submersion	1	0	0	1	2	0	0	2
Unint Inj: Suffocation & Strangulation in Bed	10	0	1	9	4	0	0	4
Unint Inj: Other Suffocation & Strangulation	17	0	0	17	2	0	0	2
Unint Inj: Inhale/Ingest-Respiratory Tract Obstruction	0	0	0	0	1	0	0	1
Unint Inj: Smoke, Fire, Flames Exposure	0	0	0	0	0	0	0	0
Unint Inj: Poisoning & Noxious Substance Exposure	0	0	0	0	0	0	0	0
Unint Inj: Other & Unspecified	0	0	0	0	1	0	0	1
Homicide: Hanging, Strangulation, Suffocation	0	0	0	0	0	0	0	0
Homicide: Firearms Discharge	2	1	0	1	0	0	0	0
Homicide: Neglect, Abandonment, Maltreatment	3	0	0	3	0	0	0	0
Homicide: Other & Unspecified Means	5	0	0	5	0	0	0	0
Medical & Surgical Care Complications	0	0	0	0	0	0	0	0
Other External Causes	2	0	0	2	0	0	0	0

* ICD-10 codes associated with each cause of death group are presented on pages (xiv-xvi).