



Vital Statistics Annual and Provisional Reports [HELP](#)

These annual and provisional reports summarize data compiled from the original birth, death, fetal death, marriage, and dissolution records filed with the Florida Bureau of Vital Statistics, as required by law.

HELP information is located in the upper right corner of this page. All PDF files open in a new window and require use of Adobe Acrobat Reader available from www.adobe.com.

Annual Reports: Available in PDF format starting with 1998.

Select a year from the Florida Vital Statistics Annual Reports year selection box. To open a section, click on the PDF icon to the right of the desired section. To save a copy of a section, place the mouse over the PDF icon, right click, and select "save target as".

Provisional Reports: Available starting with 2006. Select a year from the box in front of the Florida Vital Statistics Provisional Reports. Next, click on the radio button to the right. From the next page, select the particular table you need. The individual tables may be exported to formats such as MS Excel, MS Word and Adobe PDF.

2011 Florida Vital Statistics Annual Reports

Entire Annual Report

Introduction

Population

Births

Fetal and Infant Deaths

Deaths

Marriages and Dissolutions of Marriage

Terminations of Pregnancy

Section Reports



2013 Florida Vital Statistics Provisional Reports

For more information:

FloridaCHARTS.com

[Birth Query](#) Includes provisional birth data, updated weekly.

[Death Query](#) Includes provisional birth data, updated weekly.

[Infant Death Query](#) Includes provisional birth data, updated weekly.

[Marriage Query](#) Includes provisional marriage data, updated weekly.

[Dissolution of Marriage Query](#) Includes provisional dissolution data, updated weekly.

[Population Query](#)

Fetal and Infant Deaths

FETAL DEATHS AND INFANT DEATHS

- The number of resident fetal deaths (stillbirths occurring at 20 or more weeks of gestation) increased slightly from 1,551 in 2010 to 1,558 in 2011. The rate also increased slightly from 7.2 per 1,000 live births and fetal deaths to 7.3 per 1,000 live births and fetal deaths in 2011.
- Between 2010 and 2011, resident fetal deaths increased slightly among Whites from 822 to 832, and decreased slightly among Black and Other Races from 724 to 717.
- Of all resident fetal deaths in 2011, 70.6 percent were to mothers of Non-Hispanic and Non-Haitian origin, 19.1 percent were to mothers of Hispanic origin, 6.9 percent were to mothers of Haitian origin and 3.4 percent were to mothers whose ethnicity was unknown.
- Between 2010 and 2011, the neonatal death rate remained unchanged at 4.3 per 1,000 live births. This rate has fluctuated very little from 4.9 per 1,000 live births in 1999. The 2011 rate represents less than half the rate of 1980 (9.7 per 1,000 live births).
- In 2011, the Black and Other Race neonatal death rate (7.4 per 1,000 live births) is more than twice the White rate (3.1 per 1,000 live births). The rate for Black and Other Race increased slightly from 7.2 per 1,000 live births in 2010, while the White rate decreased slightly from 3.2 per 1,000 live births in 2010.
- Florida's 2011 infant mortality rate is 6.4 per 1,000 live births. This is a record low for the state rate. From 2000 to 2008, the resident infant mortality rate only slightly fluctuated between a low of 7.0 per 1,000 live births to a high of 7.5 per 1,000 live births. The 2011 resident infant mortality rate has dropped 33.3 percent since 1990 and is currently less than half the rate of 1980.
- The resident infant mortality rate decreased slightly from 6.5 per 1,000 live births in 2010 to 6.4 per 1,000 live births in 2011. Further analysis shows this slight decrease in the total rate is due to a decrease in the White infant mortality rate from 4.9 per 1,000 live births in 2010 to 4.6 per 1,000 live births in 2011. The infant mortality rate among Black and Other Races increased from 10.8 per 1,000 live births in 2010 to 11.1 per 1,000 live births in 2011.
- In 2011, resident infant deaths among Non-Hispanic and Non-Haitian origin accounted for 71.8 percent of all resident infant deaths. Among other ethnic groups, infants of Hispanic origin represented 22.2 percent, infants of Haitian origin represented 4.7 percent and 1.4 percent occurred to infants whose ethnicity was unknown.
- Among all resident infant deaths during 2011, 66.7 percent were neonatal deaths (occurring before infants were 28 days old). Furthermore, 42.1 percent of infant deaths occurred to infants who were less than one day old.
- The top four leading causes of resident infant deaths in 2011 were: 1) Perinatal Period Conditions (723 deaths), 2) Congenital Malformations (248 deaths), 3) Unintentional Injuries (Accidents) (85 deaths), and 4) Sudden Infant Death Syndrome (SIDS) (46 deaths). These causes accounted for 80.3 percent of all resident infant deaths.

CHART F-1: RESIDENT FETAL DEATHS AND RATES PER 1,000 LIVE BIRTHS AND FETAL DEATHS, BY RACE, FLORIDA AND UNITED STATES TOTAL, CENSUS YEARS 1920-2000 AND 2001-2011

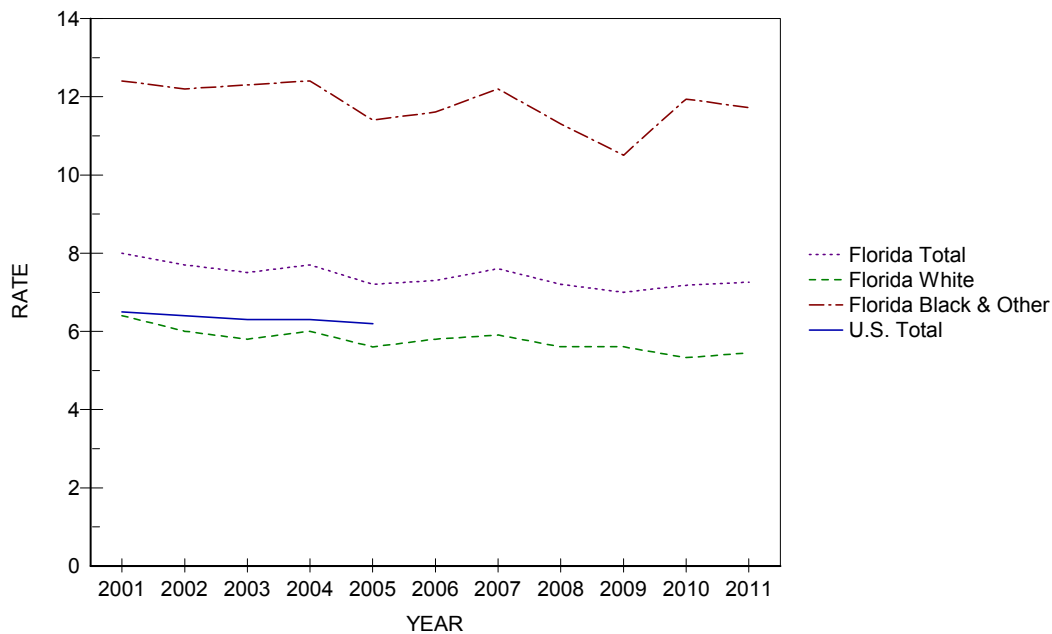
YEAR	NUMBER OF FETAL DEATHS - FL ²			RATES PER 1,000 - FL			RATE - U.S.
	TOTAL	WHITE	BLACK & OTHER	TOTAL	WHITE	BLACK & OTHER	TOTAL
1920 ¹	1,287	595	692	61.8	42.1	103.4	NA
1930 ¹	1,754	746	1,008	61.0	38.6	107.2	NA
1940	1,415	683	732	40.3	27.9	68.9	NA
1950	1,443	757	868	21.9	16.3	44.4	18.4 ³
1960	1,846	1,043	803	15.7	12.2	25.1	15.8 ³
1970	1,701	1,034	615	14.6	11.8	21.4	14.0
1980	1,355	847	491	10.2	8.6	14.1	9.1
1990	1,811	1,071	720	9.0	7.1	14.4	7.5
2000	1,675	954	704	8.1	6.3	13.0	6.6
2001	1,668	972	678	8.0	6.4	12.4	6.5
2002	1,591	920	657	7.7	6.0	12.2	6.4
2003	1,604	912	678	7.5	5.8	12.3	6.3
2004	1,701	966	723	7.7	6.0	12.4	6.3
2005	1,650	938	688	7.2	5.6	11.4	6.2
2006	1,756	1,020	733	7.3	5.8	11.6	NA
2007	1,840	1,042	792	7.6	5.9	12.2	NA
2008	1,688	951	725	7.2	5.6	11.3	NA
2009	1,569	904	655	7.0	5.6	10.5	NA
2010	1,551	822	724	7.2	5.3	11.9	NA
2011	1,558	832	717	7.3	5.4	11.7	NA

1. Only recorded data are available.

2. Data from 1920-1960 are based on the race of the child. Data from 1970 to present are based on the race of the mother.

3. Includes births and fetal deaths of persons who were not residents of the 50 states and the District of Columbia.

GRAPH F-1: RESIDENT FETAL DEATH RATES PER 1,000 LIVE BIRTHS AND FETAL DEATHS, BY RACE OF MOTHER, FLORIDA, AND UNITED STATES TOTAL, 2001-2011



**CHART F-2: RESIDENT NEONATAL DEATHS AND RATES PER 1,000 LIVE BIRTHS,
BY RACE, FLORIDA AND UNITED STATES TOTAL,
CENSUS YEARS 1940-2000 AND 2001-2011**

YEAR	NUMBER OF NEONATAL DEATHS - FL			RATES - FL ¹			RATE - U.S.
	TOTAL	WHITE	BLACK & OTHER	TOTAL	WHITE	BLACK & OTHER	TOTAL
1940	1,142	662	480	33.9	27.8	48.5	28.8
1950	1,551	975	576	24.1	21.3	30.8	20.5
1960	2,404	1,531	873	20.8	18.1	28.0	18.7
1970	1,848	1,198	648	16.1	13.8	23.0	15.1
1980	1,282	791	490	9.7	8.1	14.2	8.5
1990	1,227	742	484	6.2	5.0	9.8	5.8
2000	925	526	397	4.5	3.5	7.4	4.6
2001	980	539	440	4.8	3.6	8.2	4.5
2002	1,032	596	436	5.0	3.9	8.2	4.7
2003	1,025	584	438	4.8	3.7	8.0	4.6
2004	989	563	425	4.5	3.5	7.4	4.5
2005	1,024	544	479	4.5	3.3	8.0	4.5
2006	1,122	630	490	4.7	3.6	7.8	4.5
2007	1,062	573	487	4.4	3.3	7.6	4.4
2008	1,061	592	467	4.6	3.5	7.4	4.3
2009	995	512	480	4.5	3.2	7.8	4.2 ²
2010	929	497	431	4.3	3.2	7.2	4.0
2011	915	465	447	4.3	3.1	7.4	NA

1. Rates based on neonatal deaths by race of decedent, 1940-1960 live births based on race of child, 1970 to present live births based on race of mother.

2. Preliminary data.

**GRAPH F-2: RESIDENT NEONATAL DEATH RATES PER 1,000 LIVE BIRTHS, BY RACE,
FLORIDA AND UNITED STATES TOTAL, 2001-2011**

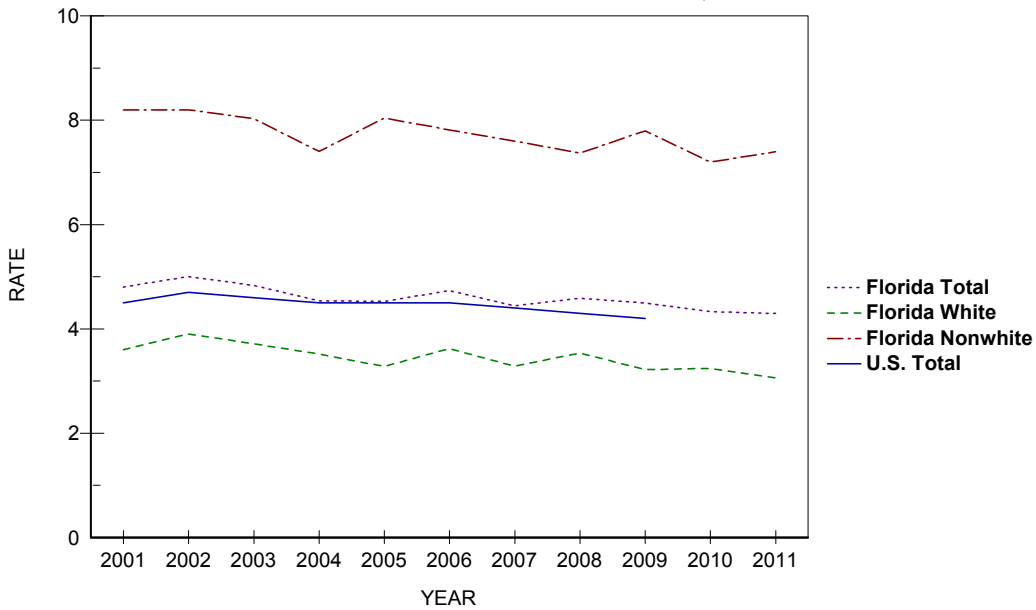


CHART F-3: RESIDENT INFANT DEATHS AND RATES PER 1,000 LIVE BIRTHS, BY RACE, FLORIDA AND UNITED STATES TOTAL, CENSUS YEARS 1920-2000 AND 2001-2011

YEAR	NUMBER OF INFANT DEATHS - FL			RATES - FL ²			RATE - U.S.
	TOTAL	WHITE	BLACK & OTHER	TOTAL	WHITE	BLACK & OTHER	TOTAL
1920 ¹	1,835	1,031	804	93.9	76.1	134.0	NA
1930 ¹	1,729	928	801	64.1	49.9	95.4	NA
1940	1,812	1,052	760	53.8	44.2	76.8	47.0
1950	2,078	1,225	853	32.3	26.8	45.7	29.2
1960	3,431	1,992	1,439	29.7	23.6	46.1	26.0
1970	2,470	1,538	930	21.5	17.7	33.0	20.0
1980	1,918	1,137	780	14.6	11.7	22.7	12.6
1990	1,912	1,123	787	9.6	7.5	16.0	9.2
2000	1,423	810	611	7.0	5.4	11.4	6.9
2001	1,495	839	655	7.3	5.5	12.3	6.8
2002	1,548	892	656	7.5	5.9	12.4	7.0
2003	1,584	907	674	7.5	5.8	12.4	6.9
2004	1,536	876	659	7.0	5.5	11.5	6.8
2005	1,626	882	743	7.2	5.3	12.5	6.9
2006	1,713	974	737	7.2	5.6	11.8	6.7
2007	1,689	906	781	7.1	5.2	12.2	6.8
2008	1,667	914	751	7.2	5.5	11.8	6.6
2009	1,525	780	742	6.9	4.9	12.1	6.4
2010	1,400	750	649	6.5	4.9	10.8	6.1 ³
2011	1,372	698	670	6.4	4.6	11.1	NA

1. Only recorded data are available.

2. Rates based on neonatal deaths by race of decedent, 1920-1960 live births based on race of child, 1970 to present live births based on race of mother.

3. Preliminary data.

GRAPH F-3: RESIDENT INFANT DEATH RATES PER 1,000 LIVE BIRTHS, BY RACE, FLORIDA AND UNITED STATES TOTAL, 2001-2011

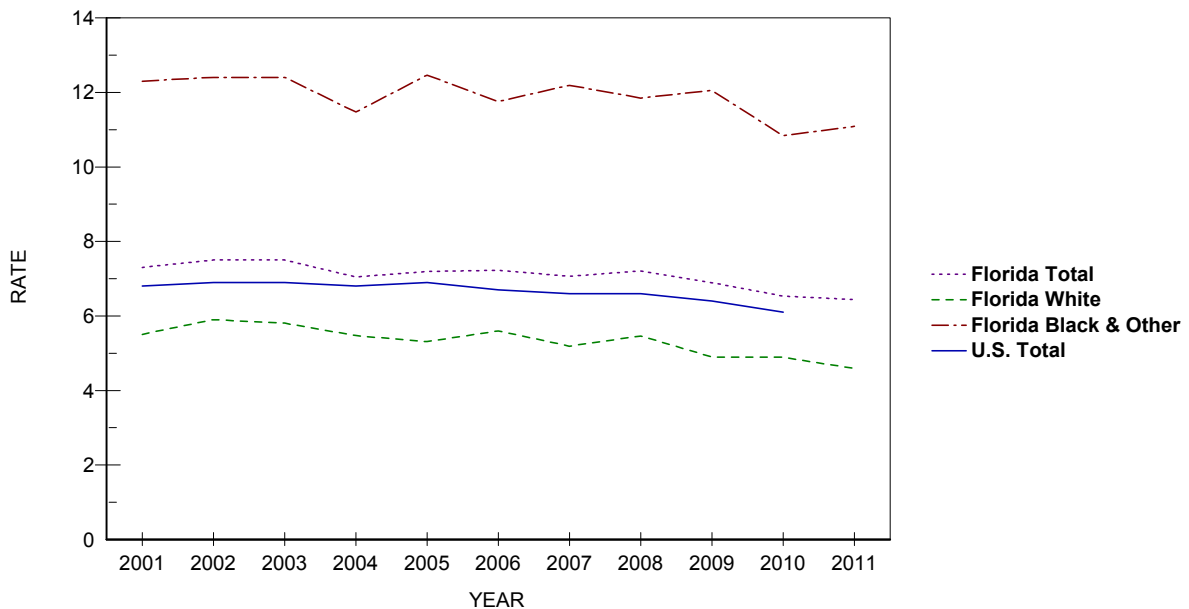


TABLE F-1: RESIDENT AND RECORDED FETAL DEATHS (OF 20 OR MORE WEEKS GESTATION) AND RATES PER 1,000 LIVE BIRTHS AND FETAL DEATHS, BY RACE OF MOTHER, BY COUNTY, FLORIDA, 2011

	RESIDENT FETAL DEATHS						RATES		
	NUMBERS								
	TOTAL	WHITE	BLACK AND OTHER			UNK	TOTAL	WHITE	BLACK & OTHER
		TOTAL	BLACK	OTHER					
FLORIDA	1,558	832	717	641	76	9	7.3	5.4	11.7
ALACHUA	25	11	14	12	2	0	8.4	6.1	11.9
BAKER	3	1	2	2	0	0	8.7	3.3	46.5
BAY	13	10	3	2	1	0	6.0	6.0	6.7
BRADFORD	1	0	1	1	0	0	3.1	0.0	14.7
BREVARD	31	18	12	12	0	1	6.0	4.3	11.4
BROWARD	187	61	126	114	12	0	8.8	5.3	13.1
CALHOUN	3	2	1	1	0	0	19.5	14.4	66.7
CHARLOTTE	6	6	0	0	0	0	6.0	7.0	0.0
CITRUS	7	7	0	0	0	0	6.4	7.0	0.0
CLAY	11	7	4	3	1	0	5.2	4.0	11.0
COLLIER	12	9	3	3	0	0	3.7	3.3	6.5
COLUMBIA	8	5	3	1	2	0	10.3	8.3	17.3
MIAMI-DADE	222	106	114	109	5	2	7.0	4.6	13.2
DESOTO	5	5	0	0	0	0	12.8	14.9	0.0
DIXIE	0	0	0	0	0	0	0.0	0.0	0.0
DUVAL	106	26	79	68	11	1	8.5	3.8	14.3
ESCAMBIA	27	11	16	14	2	0	7.0	4.5	11.3
FLAGLER	5	5	0	0	0	0	6.3	7.9	0.0
FRANKLIN	1	1	0	0	0	0	9.9	11.0	0.0
GADSDEN	4	1	3	3	0	0	6.7	4.2	8.3
GILCHRIST	2	1	1	1	0	0	11.0	6.1	62.5
GLADES	0	0	0	0	0	0	0.0	0.0	0.0
GULF	0	0	0	0	0	0	0.0	0.0	0.0
HAMILTON	2	1	1	1	0	0	12.7	9.2	20.8
HARDEE	2	2	0	0	0	0	5.1	5.5	0.0
HENDRY	7	5	1	1	0	1	11.3	10.0	8.1
HERNANDO	13	12	1	1	0	0	8.3	8.6	5.8
HIGHLANDS	10	6	4	4	0	0	10.8	8.3	19.5
HILLSBOROUGH	122	63	58	49	9	1	7.4	5.3	12.3
HOLMES	0	0	0	0	0	0	0.0	0.0	0.0
INDIAN RIVER	4	3	1	1	0	0	3.1	3.8	3.5
JACKSON	6	4	2	2	0	0	12.8	12.1	14.4
JEFFERSON	2	2	0	0	0	0	15.6	26.7	0.0
LAFAYETTE	1	1	0	0	0	0	11.6	12.8	0.0
LAKE	25	20	5	3	2	0	8.4	8.5	8.3
LEE	54	42	11	10	1	1	8.5	8.1	9.7
LEON	23	8	15	15	0	0	7.5	4.9	10.4
LEVY	4	1	3	3	0	0	10.4	3.0	58.8
LIBERTY	0	0	0	0	0	0	0.0	0.0	0.0
MADISON	2	2	0	0	0	0	9.3	18.3	0.0
MANATEE	30	24	6	6	0	0	8.8	9.1	7.9
MARION	33	22	11	10	1	0	9.7	8.5	13.8
MARTIN	6	5	1	1	0	0	5.0	5.0	5.7
MONROE	3	2	1	0	1	0	4.1	3.3	8.8
NASSAU	4	4	0	0	0	0	5.2	5.6	0.0
OKALOOSA	14	10	4	3	1	0	5.3	4.6	8.4
OKEECHOBEE	2	2	0	0	0	0	3.7	4.2	0.0
ORANGE	102	48	53	49	4	1	6.6	4.9	9.3
OSCEOLA	28	20	8	6	2	0	7.4	6.3	12.6
PALM BEACH	93	45	48	40	8	0	6.7	4.9	10.3
PASCO	21	18	3	2	1	0	4.4	4.3	5.4
PINELLAS	61	35	26	22	4	0	7.3	5.6	12.6
POLK	60	36	23	21	2	1	8.3	6.5	13.5
PUTNAM	13	10	3	3	0	0	15.2	16.1	12.9
SAINT JOHNS	12	11	1	0	1	0	6.6	6.9	4.4
SAINT LUCIE	24	10	14	13	1	0	7.9	5.0	14.1
SANTA ROSA	8	8	0	0	0	0	4.3	4.8	0.0
SARASOTA	15	13	2	1	1	0	5.1	5.2	4.7
SEMINOLE	25	19	6	5	1	0	5.6	5.6	5.6
SUMTER	2	0	2	2	0	0	4.7	0.0	24.1
SUWANNEE	3	3	0	0	0	0	6.2	7.4	0.0
TAYLOR	5	1	4	4	0	0	20.2	5.3	66.7
UNION	1	1	0	0	0	0	5.8	6.5	0.0
VOLUSIA	33	19	14	14	0	0	7.0	5.1	14.7
WAKULLA	2	1	1	1	0	0	6.5	3.8	24.4
WALTON	2	0	2	2	0	0	3.2	0.0	39.2
WASHINGTON	0	0	0	0	0	0	0.0	0.0	0.0

TABLE F-1 (Cont.): RESIDENT AND RECORDED FETAL DEATHS (OF 20 OR MORE WEEKS GESTATION) AND RATES PER 1,000 LIVE BIRTHS AND FETAL DEATHS, BY RACE OF MOTHER, BY COUNTY, FLORIDA, 2011

	RECORDED FETAL DEATHS						RATES		
	NUMBERS						TOTAL	WHITE	BLACK & OTHER
	TOTAL	WHITE	BLACK AND OTHER			UNK			
		TOTAL	BLACK	OTHER					
FLORIDA	1,592	854	728	652	76	10	7.4	5.6	11.9
ALACHUA	58	31	27	22	5	0	9.8	7.3	16.6
BAKER	0	0	0	0	0	0	0.0	0.0	0.0
BAY	14	11	3	2	1	0	5.4	5.4	5.9
BRADFORD	0	0	0	0	0	0	0.0	0.0	----
BREVARD	30	17	12	12	0	1	5.8	4.1	11.6
BROWARD	223	75	147	134	13	1	9.6	6.0	13.7
CALHOUN	0	0	0	0	0	0	0.0	0.0	----
CHARLOTTE	5	5	0	0	0	0	4.3	5.0	0.0
CITRUS	4	4	0	0	0	0	4.4	4.8	0.0
CLAY	7	3	4	4	0	0	3.2	1.7	8.2
COLLIER	16	12	4	4	0	0	4.6	4.0	8.4
COLUMBIA	5	3	2	1	1	0	6.7	5.9	8.6
MIAMI-DADE	202	100	100	94	6	2	7.1	4.7	14.1
DESOTO	3	3	0	0	0	0	6.6	7.4	0.0
DIXIE	0	0	0	0	0	0	----	----	----
DUVAL	127	44	82	72	10	1	8.9	5.1	14.8
ESCAMBIA	43	23	20	18	2	0	7.8	5.8	12.8
FLAGLER	1	1	0	0	0	0	47.6	55.6	0.0
FRANKLIN	0	0	0	0	0	0	0.0	----	0.0
GADSDEN	0	0	0	0	0	0	0.0	0.0	0.0
GILCHRIST	0	0	0	0	0	0	----	----	----
GLADES	0	0	0	0	0	0	----	----	----
GULF	0	0	0	0	0	0	----	----	----
HAMILTON	0	0	0	0	0	0	0.0	0.0	----
HARDEE	0	0	0	0	0	0	0.0	0.0	----
HENDRY	0	0	0	0	0	0	0.0	0.0	----
HERNANDO	13	12	1	1	0	0	7.3	7.5	5.6
HIGHLANDS	10	6	4	4	0	0	7.7	5.7	16.8
HILLSBOROUGH	138	79	59	51	8	0	7.3	5.8	11.7
HOLMES	0	0	0	0	0	0	----	----	----
INDIAN RIVER	4	3	1	1	0	0	3.6	4.6	4.0
JACKSON	9	8	1	1	0	0	17.1	21.6	6.4
JEFFERSON	0	0	0	0	0	0	0.0	0.0	----
LAFAYETTE	0	0	0	0	0	0	0.0	0.0	----
LAKE	22	16	6	5	1	0	8.1	7.5	10.5
LEE	50	39	10	9	1	1	7.7	7.3	8.8
LEON	36	14	22	22	0	0	7.5	5.2	10.6
LEVY	0	0	0	0	0	0	0.0	0.0	----
LIBERTY	0	0	0	0	0	0	0.0	0.0	----
MADISON	0	0	0	0	0	0	----	----	----
MANATEE	20	15	5	5	0	0	7.1	6.9	7.6
MARION	25	18	7	7	0	0	9.3	8.8	11.0
MARTIN	10	7	3	3	0	0	5.6	4.7	10.8
MONROE	2	1	1	0	1	0	3.7	2.3	10.2
NASSAU	2	2	0	0	0	0	4.0	4.6	0.0
OKALOOSA	9	6	3	2	1	0	3.7	3.0	6.2
OKEECHOBEE	0	0	0	0	0	0	0.0	0.0	----
ORANGE	152	88	63	56	7	1	7.7	6.7	9.7
OSCEOLA	24	15	9	8	1	0	6.5	4.9	14.8
PALM BEACH	111	57	53	45	8	1	6.8	5.3	9.8
PASCO	7	6	1	1	0	0	5.0	4.8	6.1
PINELLAS	74	45	28	23	5	1	7.3	5.8	12.4
POLK	40	22	17	15	2	1	6.5	4.7	11.5
PUTNAM	4	2	2	2	0	0	9.3	7.0	14.2
SAINT JOHNS	9	8	1	0	1	0	7.9	8.6	5.0
SAINT LUCIE	15	7	8	7	1	0	6.9	5.2	9.9
SANTA ROSA	0	0	0	0	0	0	0.0	0.0	0.0
SARASOTA	26	23	3	2	1	0	8.0	8.4	6.2
SEMINOLE	12	7	5	5	0	0	4.0	3.2	6.6
SUMTER	0	0	0	0	0	0	----	----	----
SUWANNEE	0	0	0	0	0	0	0.0	0.0	----
TAYLOR	2	0	2	2	0	0	400.0	0.0	500.0
UNION	0	0	0	0	0	0	----	----	----
VOLUSIA	26	15	11	11	0	0	6.1	4.6	11.8
WAKULLA	0	0	0	0	0	0	0.0	0.0	----
WALTON	2	1	1	1	0	0	2.2	1.2	17.5
WASHINGTON	0	0	0	0	0	0	----	----	----

TABLE F-2: RESIDENT FETAL DEATHS BY HISPANIC OR HAITIAN ORIGIN OF MOTHER, BY COUNTY, FLORIDA, 2011

	TOTAL	HISPANIC ORIGIN								NON-HISPANIC/HAITIAN	UNK
		TOTAL HISPANIC	MEXICAN	PUERTO RICAN	CUBAN	CENTRAL/SOUTH AMERICAN	OTHER/UNK HISPANIC	HAITIAN			
FLORIDA	1,558	298	75	68	49	72	34	107	1,100	53	
ALACHUA	25	2	0	1	0	1	0	0	23	0	
BAKER	3	0	0	0	0	0	0	0	3	0	
BAY	13	2	0	1	0	0	1	0	11	0	
BRADFORD	1	0	0	0	0	0	0	0	1	0	
BREVARD	31	1	0	0	1	0	0	3	26	1	
BROWARD	187	34	8	4	3	13	6	29	116	8	
CALHOUN	3	0	0	0	0	0	0	0	3	0	
CHARLOTTE	6	0	0	0	0	0	0	0	6	0	
CITRUS	7	0	0	0	0	0	0	0	7	0	
CLAY	11	1	0	1	0	0	0	0	10	0	
COLLIER	12	6	4	1	0	1	0	2	4	0	
COLUMBIA	8	3	1	0	0	0	2	0	5	0	
MIAMI-DADE	222	84	0	15	37	19	13	32	94	12	
DESOTO	5	3	3	0	0	0	0	0	2	0	
DIXIE	0	0	0	0	0	0	0	0	0	0	
DUVAL	106	1	0	1	0	0	0	1	103	1	
ESCAMBIA	27	0	0	0	0	0	0	1	26	0	
FLAGLER	5	1	0	0	0	1	0	0	4	0	
FRANKLIN	1	0	0	0	0	0	0	0	1	0	
GADSDEN	4	1	1	0	0	0	0	0	3	0	
GILCHRIST	2	0	0	0	0	0	0	0	2	0	
GLADES	0	0	0	0	0	0	0	0	0	0	
GULF	0	0	0	0	0	0	0	0	0	0	
HAMILTON	2	1	1	0	0	0	0	0	1	0	
HARDEE	2	1	1	0	0	0	0	0	1	0	
HENDRY	7	2	2	0	0	0	0	0	5	0	
HERNANDO	13	1	0	0	0	1	0	0	12	0	
HIGHLANDS	10	1	1	0	0	0	0	0	9	0	
HILLSBOROUGH	122	28	7	9	1	8	3	2	87	5	
HOLMES	0	0	0	0	0	0	0	0	0	0	
INDIAN RIVER	4	0	0	0	0	0	0	0	4	0	
JACKSON	6	2	1	0	0	1	0	0	4	0	
JEFFERSON	2	0	0	0	0	0	0	0	2	0	
LAFAYETTE	1	0	0	0	0	0	0	0	1	0	
LAKE	25	4	2	0	1	1	0	0	21	0	
LEE	54	16	7	2	2	4	1	5	31	2	
LEON	23	0	0	0	0	0	0	0	23	0	
LEVY	4	0	0	0	0	0	0	0	4	0	
LIBERTY	0	0	0	0	0	0	0	0	0	0	
MADISON	2	0	0	0	0	0	0	0	2	0	
MANATEE	30	5	1	1	0	3	0	2	23	0	
MARION	33	2	0	2	0	0	0	0	30	1	
MARTIN	6	3	0	2	0	1	0	0	2	1	
MONROE	3	1	1	0	0	0	0	0	2	0	
NASSAU	4	1	0	1	0	0	0	0	3	0	
OKALOOSA	14	2	0	0	0	1	1	0	12	0	
OKEECHOBEE	2	1	1	0	0	0	0	0	1	0	
ORANGE	102	14	5	7	0	2	0	10	65	13	
OSCEOLA	28	10	1	5	0	3	1	0	14	4	
PALM BEACH	93	21	5	3	3	8	2	16	55	1	
PASCO	21	7	3	4	0	0	0	0	14	0	
PINELLAS	61	7	3	0	0	0	4	0	54	0	
POLK	60	14	9	4	0	1	0	1	43	2	
PUTNAM	13	0	0	0	0	0	0	0	13	0	
SAINT JOHNS	12	0	0	0	0	0	0	0	12	0	
SAINT LUCIE	24	3	1	1	0	1	0	3	18	0	
SANTA ROSA	8	0	0	0	0	0	0	0	8	0	
SARASOTA	15	4	3	0	0	1	0	0	11	0	
SEMINOLE	25	4	1	1	1	1	0	0	20	1	
SUMTER	2	0	0	0	0	0	0	0	2	0	
SUWANNEE	3	0	0	0	0	0	0	0	3	0	
TAYLOR	5	0	0	0	0	0	0	0	4	1	
UNION	1	0	0	0	0	0	0	0	1	0	
VOLUSIA	33	4	2	2	0	0	0	0	29	0	
WAKULLA	2	0	0	0	0	0	0	0	2	0	
WALTON	2	0	0	0	0	0	0	0	2	0	
WASHINGTON	0	0	0	0	0	0	0	0	0	0	

TABLE F-3: RESIDENT FETAL DEATHS BY AGE OF MOTHER, BY COUNTY, FLORIDA, 2011

	TOTAL	AGE OF MOTHER													
		<13	13	14	15	16	17	18	19	20-24	25-29	30-34	35-44	45+	UNK
FLORIDA	1,558	0	0	2	7	16	27	43	68	371	397	328	262	8	29
ALACHUA	25	0	0	0	0	0	0	0	2	4	7	8	4	0	0
BAKER	3	0	0	0	0	0	0	0	0	2	1	0	0	0	0
BAY	13	0	0	0	1	0	0	0	0	3	3	4	2	0	0
BRADFORD	1	0	0	0	0	0	0	0	0	0	0	0	1	0	0
BREVARD	31	0	0	0	1	1	1	1	0	3	12	9	2	0	2
BROWARD	187	0	0	0	0	0	1	5	4	34	49	45	34	0	15
CALHOUN	3	0	0	0	0	1	0	0	0	0	1	1	0	0	0
CHARLOTTE	6	0	0	0	0	0	0	0	0	3	2	0	1	0	0
CITRUS	7	0	0	0	0	0	0	0	2	3	2	0	0	0	0
CLAY	11	0	0	0	0	0	0	0	1	3	5	2	0	0	0
COLLIER	12	0	0	0	0	0	0	1	0	2	4	4	1	0	0
COLUMBIA	8	0	0	0	0	0	0	1	0	1	5	0	1	0	0
MIAMI-DADE	222	0	0	0	1	0	6	6	5	46	57	37	58	1	5
DESOTO	5	0	0	0	0	0	0	0	1	1	1	1	1	0	0
DIXIE	0	0	0	0	0	0	0	0	0	0	0	0	0	0	0
DUVAL	106	0	0	0	1	2	2	1	10	25	27	16	21	1	0
ESCAMBIA	27	0	0	0	0	0	0	0	0	11	10	3	3	0	0
FLAGLER	5	0	0	0	0	0	0	0	0	2	1	1	1	0	0
FRANKLIN	1	0	0	0	0	0	0	0	0	0	1	0	0	0	0
GADSDEN	4	0	0	0	0	0	0	0	0	3	1	0	0	0	0
GILCHRIST	2	0	0	0	0	0	0	0	0	1	0	1	0	0	0
GLADES	0	0	0	0	0	0	0	0	0	0	0	0	0	0	0
GULF	0	0	0	0	0	0	0	0	0	0	0	0	0	0	0
HAMILTON	2	0	0	0	0	0	0	0	0	1	1	0	0	0	0
HARDEE	2	0	0	0	0	0	0	0	0	0	0	0	1	1	0
HENDRY	7	0	0	0	0	0	0	0	1	2	2	0	2	0	0
HERNANDO	13	0	0	0	0	0	0	0	3	8	1	0	1	0	0
HIGHLANDS	10	0	0	0	0	0	0	0	1	2	3	3	1	0	0
HILLSBOROUGH	122	0	0	1	0	3	4	6	5	26	32	34	11	0	0
HOLMES	0	0	0	0	0	0	0	0	0	0	0	0	0	0	0
INDIAN RIVER	4	0	0	0	0	0	0	2	0	0	2	0	0	0	0
JACKSON	6	0	0	0	0	0	0	1	1	2	1	1	0	0	0
JEFFERSON	2	0	0	0	0	0	0	0	0	2	0	0	0	0	0
LAFAYETTE	1	0	0	0	0	0	0	0	0	0	1	0	0	0	0
LAKE	25	0	0	0	0	1	0	0	2	7	5	7	3	0	0
LEE	54	0	0	0	0	0	0	4	1	11	20	10	6	1	1
LEON	23	0	0	1	0	0	0	0	1	5	7	4	5	0	0
LEVY	4	0	0	0	0	0	0	0	0	3	1	0	0	0	0
LIBERTY	0	0	0	0	0	0	0	0	0	0	0	0	0	0	0
MADISON	2	0	0	0	0	0	0	0	0	0	1	1	0	0	0
MANATEE	30	0	0	0	0	0	0	0	2	6	8	11	2	0	1
MARION	33	0	0	0	0	1	0	2	1	13	6	5	3	2	0
MARTIN	6	0	0	0	0	1	0	1	0	2	1	0	1	0	0
MONROE	3	0	0	0	0	0	0	0	0	1	0	2	0	0	0
NASSAU	4	0	0	0	0	0	0	0	0	2	2	0	0	0	0
OKALOOSA	14	0	0	0	0	0	0	0	0	7	4	1	2	0	0
OKEECHOBEE	2	0	0	0	0	0	0	0	0	2	0	0	0	0	0
ORANGE	102	0	0	0	0	2	1	3	6	18	22	21	25	0	4
OSCEOLA	28	0	0	0	1	0	1	0	2	9	5	6	4	0	0
PALM BEACH	93	0	0	0	1	0	3	3	3	21	21	27	14	0	0
PASCO	21	0	0	0	0	0	0	2	1	2	6	7	3	0	0
PINELLAS	61	0	0	0	0	1	1	1	2	24	12	9	10	0	1
POLK	60	0	0	0	1	1	2	1	4	16	14	10	11	0	0
PUTNAM	13	0	0	0	0	1	0	1	1	3	3	2	2	0	0
SAINT JOHNS	12	0	0	0	0	0	0	0	0	4	3	2	3	0	0
SAINT LUCIE	24	0	0	0	0	0	0	1	1	7	2	8	4	1	0
SANTA ROSA	8	0	0	0	0	0	1	0	1	0	3	1	2	0	0
SARASOTA	15	0	0	0	0	0	0	0	0	4	1	4	6	0	0
SEMINOLE	25	0	0	0	0	1	0	0	3	3	5	7	5	1	0
SUMTER	2	0	0	0	0	0	0	0	0	1	1	0	0	0	0
SUWANNEE	3	0	0	0	0	0	0	0	0	0	3	0	0	0	0
TAYLOR	5	0	0	0	0	0	0	0	0	1	1	3	0	0	0
UNION	1	0	0	0	0	0	1	0	0	0	0	0	0	0	0
VOLUSIA	33	0	0	0	0	0	2	1	1	8	7	9	5	0	0
WAKULLA	2	0	0	0	0	0	1	0	0	1	0	0	0	0	0
WALTON	2	0	0	0	0	0	0	0	0	0	1	1	0	0	0
WASHINGTON	0	0	0	0	0	0	0	0	0	0	0	0	0	0	0

TABLE F-4: RESIDENT AND RECORDED NEONATAL DEATHS (UNDER 28 DAYS) AND RATES PER 1,000 LIVE BIRTHS, BY RACE, BY COUNTY, FLORIDA, 2011

	RESIDENT NEONATAL DEATHS							RATES*		
	TOTAL	WHITE	NUMBERS			UNK	TOTAL	WHITE	BLACK & OTHER	
			TOTAL	BLACK	OTHER					
FLORIDA	915	465	447	401	46	3	4.3	3.1	7.4	
ALACHUA	13	10	3	3	0	0	4.4	5.6	2.6	
BAKER	2	1	1	1	0	0	5.9	3.3	24.4	
BAY	10	7	3	2	1	0	4.6	4.2	6.7	
BRADFORD	0	0	0	0	0	0	0.0	0.0	0.0	
BREVARD	26	20	6	4	2	0	5.0	4.8	5.8	
BROWARD	83	27	56	53	3	0	3.9	2.3	5.9	
CALHOUN	0	0	0	0	0	0	0.0	0.0	0.0	
CHARLOTTE	2	0	2	2	0	0	2.0	0.0	15.4	
CITRUS	6	3	3	3	0	0	5.5	3.0	33.3	
CLAY	9	7	2	2	0	0	4.3	4.1	5.6	
COLLIER	9	8	1	1	0	0	2.8	2.9	2.2	
COLUMBIA	1	1	0	0	0	0	1.3	1.7	0.0	
MIAMI-DADE	95	46	48	46	2	1	3.0	2.0	5.6	
DESOTO	0	0	0	0	0	0	0.0	0.0	0.0	
DIXIE	2	2	0	0	0	0	13.3	14.6	0.0	
DUVAL	69	13	56	46	10	0	5.6	1.9	10.3	
ESCAMBIA	20	9	11	10	1	0	5.2	3.7	7.8	
FLAGLER	5	3	2	2	0	0	6.4	4.8	13.3	
FRANKLIN	0	0	0	0	0	0	0.0	0.0	0.0	
GADSDEN	5	0	5	4	1	0	8.4	0.0	14.0	
GILCHRIST	0	0	0	0	0	0	0.0	0.0	0.0	
GLADES	0	0	0	0	0	0	0.0	0.0	0.0	
GULF	1	1	0	0	0	0	7.2	8.5	0.0	
HAMILTON	1	1	0	0	0	0	6.5	9.3	0.0	
HARDEE	0	0	0	0	0	0	0.0	0.0	0.0	
HENDRY	1	1	0	0	0	0	1.6	2.0	0.0	
HERNANDO	6	5	1	1	0	0	3.9	3.6	5.9	
HIGHLANDS	1	0	1	1	0	0	1.1	0.0	5.0	
HILLSBOROUGH	98	41	56	46	10	1	6.0	3.5	12.0	
HOLMES	1	1	0	0	0	0	5.2	5.5	0.0	
INDIAN RIVER	12	6	6	6	0	0	9.4	7.7	21.0	
JACKSON	3	3	0	0	0	0	6.5	9.2	0.0	
JEFFERSON	0	0	0	0	0	0	0.0	0.0	0.0	
LAFAYETTE	1	0	1	1	0	0	11.8	0.0	125.0	
LAKE	14	8	6	6	0	0	4.8	3.4	10.1	
LEE	29	13	16	15	1	0	4.6	2.5	14.3	
LEON	11	3	8	8	0	0	3.6	1.8	5.6	
LEVY	0	0	0	0	0	0	0.0	0.0	0.0	
LIBERTY	2	0	2	2	0	0	22.5	0.0	200.0	
MADISON	3	0	3	3	0	0	14.0	0.0	28.0	
MANATEE	24	15	9	9	0	0	7.1	5.7	12.0	
MARION	14	9	5	4	1	0	4.2	3.5	6.3	
MARTIN	4	3	1	1	0	0	3.4	3.0	5.7	
MONROE	3	1	2	2	0	0	4.2	1.6	17.9	
NASSAU	3	2	1	1	0	0	3.9	2.8	18.2	
OKALOOSA	7	3	4	3	1	0	2.7	1.4	8.5	
OKEECHOBEE	0	0	0	0	0	0	0.0	0.0	0.0	
ORANGE	78	41	37	30	7	0	5.1	4.2	6.5	
OSCEOLA	19	17	2	2	0	0	5.0	5.4	3.2	
PALM BEACH	54	24	29	27	2	1	3.9	2.6	6.3	
PASCO	23	21	2	2	0	0	4.9	5.1	3.6	
PINELLAS	39	20	19	17	2	0	4.7	3.2	9.3	
POLK	32	18	14	14	0	0	4.4	3.3	8.3	
PUTNAM	5	2	3	3	0	0	6.0	3.3	13.1	
SAINT JOHNS	5	5	0	0	0	0	2.8	3.2	0.0	
SAINT LUCIE	7	4	3	3	0	0	2.3	2.0	3.1	
SANTA ROSA	6	6	0	0	0	0	3.2	3.6	0.0	
SARASOTA	6	5	1	1	0	0	2.0	2.0	2.3	
SEMINOLE	15	10	5	4	1	0	3.4	3.0	4.7	
SUMTER	2	1	1	1	0	0	4.7	2.9	12.3	
SUWANNEE	1	1	0	0	0	0	2.1	2.5	0.0	
TAYLOR	1	0	1	1	0	0	4.1	0.0	17.9	
UNION	1	1	0	0	0	0	5.9	6.6	0.0	
VOLUSIA	17	10	7	6	1	0	3.7	2.7	7.5	
WAKULLA	1	1	0	0	0	0	3.3	3.8	0.0	
WALTON	3	3	0	0	0	0	4.8	5.2	0.0	
WASHINGTON	1	1	0	0	0	0	4.2	5.4	0.0	

*Rates based on neonatal deaths by race of decedent, live births by race of mother.

TABLE F-4 (Cont.): RESIDENT AND RECORDED NEONATAL DEATHS (UNDER 28 DAYS) AND RATES PER 1,000 LIVE BIRTHS, BY RACE, BY COUNTY, FLORIDA, 2011

	RECORDED NEONATAL DEATHS						RATES*		
	TOTAL	WHITE	NUMBERS			UNK	TOTAL	WHITE	BLACK & OTHER
			TOTAL	BLACK	OTHER				
FLORIDA	934	483	448	402	46	3	4.4	3.2	7.4
ALACHUA	46	30	16	15	1	0	7.9	7.1	10.0
BAKER	0	0	0	0	0	0	0.0	0.0	0.0
BAY	6	3	3	3	0	0	2.3	1.5	5.9
BRADFORD	0	0	0	0	0	0	0.0	0.0	----
BREVARD	18	15	3	2	1	0	3.5	3.7	2.9
BROWARD	86	29	56	53	3	1	3.7	2.3	5.3
CALHOUN	0	0	0	0	0	0	0.0	0.0	----
CHARLOTTE	2	1	1	1	0	0	1.7	1.0	6.0
CITRUS	1	0	1	1	0	0	1.1	0.0	12.7
CLAY	4	2	2	2	0	0	1.8	1.2	4.1
COLLIER	6	6	0	0	0	0	1.7	2.0	0.0
COLUMBIA	2	2	0	0	0	0	2.7	4.0	0.0
MIAMI-DADE	98	48	50	48	2	0	3.5	2.3	7.2
DESOTO	0	0	0	0	0	0	0.0	0.0	0.0
DIXIE	0	0	0	0	0	0	----	----	----
DUVAL	82	24	58	47	11	0	5.8	2.8	10.6
ESCAMBIA	46	32	14	11	3	0	8.4	8.1	9.1
FLAGLER	0	0	0	0	0	0	0.0	0.0	0.0
FRANKLIN	0	0	0	0	0	0	0.0	----	0.0
GADSDEN	2	0	2	1	1	0	400.0	0.0	666.7
GILCHRIST	0	0	0	0	0	0	----	----	----
GLADES	0	0	0	0	0	0	----	----	----
GULF	0	0	0	0	0	0	----	----	----
HAMILTON	0	0	0	0	0	0	0.0	0.0	----
HARDEE	0	0	0	0	0	0	0.0	0.0	----
HENDRY	1	1	0	0	0	0	333.3	333.3	----
HERNANDO	0	0	0	0	0	0	0.0	0.0	0.0
HIGHLANDS	2	0	2	2	0	0	1.6	0.0	8.5
HILLSBOROUGH	132	68	63	53	10	1	7.1	5.0	12.6
HOLMES	0	0	0	0	0	0	----	----	----
INDIAN RIVER	4	2	2	2	0	0	3.6	3.1	8.0
JACKSON	3	1	2	2	0	0	5.8	2.8	12.9
JEFFERSON	0	0	0	0	0	0	0.0	0.0	----
LAFAYETTE	0	0	0	0	0	0	0.0	0.0	----
LAKE	2	1	1	1	0	0	0.7	0.5	1.8
LEE	29	14	15	14	1	0	4.5	2.6	13.3
LEON	19	5	14	14	0	0	4.0	1.9	6.8
LEVY	0	0	0	0	0	0	0.0	0.0	----
LIBERTY	0	0	0	0	0	0	0.0	0.0	----
MADISON	0	0	0	0	0	0	----	----	----
MANATEE	8	4	4	4	0	0	2.8	1.9	6.1
MARION	1	0	1	1	0	0	0.4	0.0	1.6
MARTIN	1	0	1	1	0	0	0.6	0.0	3.6
MONROE	1	1	0	0	0	0	1.9	2.3	0.0
NASSAU	2	1	1	1	0	0	4.1	2.3	17.5
OKALOOSA	3	2	1	1	0	0	1.2	1.0	2.1
OKEECHOBEE	0	0	0	0	0	0	0.0	0.0	----
ORANGE	149	91	58	49	9	0	7.6	6.9	9.1
OSCEOLA	2	2	0	0	0	0	0.5	0.7	0.0
PALM BEACH	68	31	36	34	2	1	4.2	2.9	6.7
PASCO	2	2	0	0	0	0	1.4	1.6	0.0
PINELLAS	68	44	24	22	2	0	6.8	5.7	10.7
POLK	14	5	9	9	0	0	2.3	1.1	6.2
PUTNAM	1	1	0	0	0	0	2.4	3.5	0.0
SAINT JOHNS	3	2	1	1	0	0	2.7	2.2	5.0
SAINT LUCIE	3	2	1	1	0	0	1.4	1.5	1.3
SANTA ROSA	0	0	0	0	0	0	0.0	0.0	0.0
SARASOTA	8	5	3	3	0	0	2.5	1.8	6.2
SEMINOLE	3	2	1	1	0	0	1.0	0.9	1.3
SUMTER	0	0	0	0	0	0	----	----	----
SUWANNEE	0	0	0	0	0	0	0.0	0.0	----
TAYLOR	0	0	0	0	0	0	0.0	0.0	0.0
UNION	0	0	0	0	0	0	----	----	----
VOLUSIA	4	3	1	1	0	0	1.0	0.9	1.1
WAKULLA	0	0	0	0	0	0	0.0	0.0	----
WALTON	1	0	1	1	0	0	1.1	0.0	17.9
WASHINGTON	1	1	0	0	0	0	----	----	----

*Rates based on neonatal deaths by race of decedent, live births by race of mother.

TABLE F-5: RESIDENT AND RECORDED INFANT DEATHS (UNDER 1 YEAR) AND RATES PER 1,000 LIVE BIRTHS, BY RACE, BY COUNTY, FLORIDA, 2011

	RESIDENT INFANT DEATHS							RATES*		
	NUMBERS						TOTAL	WHITE	BLACK & OTHER	
	TOTAL	WHITE	BLACK AND OTHER			UNK				
		TOTAL	BLACK	OTHER						
FLORIDA	1,372	698	670	584	86	4	6.4	4.6	11.1	
ALACHUA	16	11	5	5	0	0	5.4	6.1	4.3	
BAKER	5	4	1	1	0	0	14.7	13.3	24.4	
BAY	20	13	7	3	4	0	9.3	7.9	15.6	
BRADFORD	1	1	0	0	0	0	3.1	3.9	0.0	
BREVARD	35	23	12	9	3	0	6.8	5.6	11.5	
BROWARD	129	42	87	81	6	0	6.1	3.6	9.2	
CALHOUN	0	0	0	0	0	0	0.0	0.0	0.0	
CHARLOTTE	5	3	2	2	0	0	5.1	3.5	15.4	
CITRUS	8	5	3	3	0	0	7.4	5.0	33.3	
CLAY	10	8	2	2	0	0	4.8	4.6	5.6	
COLLIER	16	12	4	4	0	0	5.0	4.4	8.7	
COLUMBIA	3	3	0	0	0	0	3.9	5.0	0.0	
MIAMI-DADE	147	70	76	72	4	1	4.7	3.1	8.9	
DESOTO	0	0	0	0	0	0	0.0	0.0	0.0	
DIXIE	2	2	0	0	0	0	13.3	14.6	0.0	
DUVAL	90	19	71	56	15	0	7.3	2.8	13.1	
ESCAMBIA	29	14	15	13	2	0	7.6	5.8	10.7	
FLAGLER	6	3	3	3	0	0	7.6	4.8	20.0	
FRANKLIN	0	0	0	0	0	0	0.0	0.0	0.0	
GADSDEN	6	0	6	5	1	0	10.1	0.0	16.8	
GILCHRIST	0	0	0	0	0	0	0.0	0.0	0.0	
GLADES	0	0	0	0	0	0	0.0	0.0	0.0	
GULF	1	1	0	0	0	0	7.2	8.5	0.0	
HAMILTON	3	3	0	0	0	0	19.4	27.8	0.0	
HARDEE	2	2	0	0	0	0	5.1	5.5	0.0	
HENDRY	3	1	2	1	1	0	4.9	2.0	16.4	
HERNANDO	14	11	3	3	0	0	9.0	8.0	17.6	
HIGHLANDS	3	1	2	2	0	0	3.3	1.4	10.0	
HILLSBOROUGH	142	61	80	65	15	1	8.6	5.2	17.2	
HOLMES	2	2	0	0	0	0	10.5	11.0	0.0	
INDIAN RIVER	16	8	8	8	0	0	12.5	10.3	28.0	
JACKSON	5	4	1	1	0	0	10.8	12.2	7.3	
JEFFERSON	1	1	0	0	0	0	7.9	13.7	0.0	
LAFAYETTE	1	0	1	1	0	0	11.8	0.0	125.0	
LAKE	20	13	7	7	0	0	6.8	5.6	11.7	
LEE	42	23	19	17	2	0	6.7	4.5	17.0	
LEON	18	5	13	12	1	0	5.9	3.1	9.1	
LEVY	0	0	0	0	0	0	0.0	0.0	0.0	
LIBERTY	3	1	2	2	0	0	33.7	12.7	200.0	
MADISON	3	0	3	3	0	0	14.0	0.0	28.0	
MANATEE	31	20	11	11	0	0	9.2	7.7	14.7	
MARION	23	16	7	6	1	0	6.9	6.2	8.9	
MARTIN	5	4	1	1	0	0	4.2	4.0	5.7	
MONROE	3	1	2	2	0	0	4.2	1.6	17.9	
NASSAU	3	2	1	1	0	0	3.9	2.8	18.2	
OKALOOSA	14	7	7	5	2	0	5.3	3.2	14.8	
OKEECHOBEE	1	0	1	1	0	0	1.9	0.0	18.2	
ORANGE	119	57	62	49	13	0	7.7	5.9	11.0	
OSCEOLA	25	20	5	5	0	0	6.6	6.4	8.0	
PALM BEACH	81	33	47	43	4	1	5.9	3.6	10.2	
PASCO	29	25	4	3	1	0	6.2	6.0	7.3	
PINELLAS	55	31	24	20	4	0	6.6	5.0	11.8	
POLK	48	26	22	21	1	0	6.7	4.7	13.1	
PUTNAM	7	3	4	4	0	0	8.3	4.9	17.5	
SAINT JOHNS	6	6	0	0	0	0	3.3	3.8	0.0	
SAINT LUCIE	14	6	8	7	1	0	4.7	3.0	8.2	
SANTA ROSA	11	10	1	0	1	0	5.9	6.0	5.1	
SARASOTA	10	7	3	2	1	0	3.4	2.8	7.0	
SEMINOLE	28	19	9	7	2	0	6.3	5.6	8.4	
SUMTER	5	3	2	2	0	0	11.7	8.7	24.7	
SUWANNEE	3	3	0	0	0	0	6.2	7.5	0.0	
TAYLOR	3	2	1	1	0	0	12.4	10.8	17.9	
UNION	1	1	0	0	0	0	5.9	6.6	0.0	
VOLUSIA	30	19	11	10	1	0	6.4	5.1	11.8	
WAKULLA	2	2	0	0	0	0	6.6	7.6	0.0	
WALTON	3	3	0	0	0	0	4.8	5.2	0.0	
WASHINGTON	1	1	0	0	0	0	4.2	5.4	0.0	

*Rates based on infant deaths by race of decedent, live births by race of mother.

TABLE F-5 (Cont.): RESIDENT AND RECORDED INFANT DEATHS (UNDER 1 YEAR) AND RATES PER 1,000 LIVE BIRTHS, BY RACE, BY COUNTY, FLORIDA, 2011

	RECORDED INFANT DEATHS						RATES*		
	TOTAL	WHITE	NUMBERS			UNK	TOTAL	WHITE	BLACK & OTHER
			TOTAL	BLACK	OTHER				
FLORIDA	1,396	719	673	587	86	4	6.5	4.7	11.1
ALACHUA	62	41	21	19	2	0	10.6	9.7	13.1
BAKER	2	2	0	0	0	0	500.0	666.7	0.0
BAY	12	7	5	4	1	0	4.6	3.5	9.9
BRADFORD	0	0	0	0	0	0	0.0	0.0	----
BREVARD	26	17	9	7	2	0	5.1	4.1	8.8
BROWARD	134	43	90	84	6	1	5.8	3.4	8.5
CALHOUN	0	0	0	0	0	0	0.0	0.0	----
CHARLOTTE	4	3	1	1	0	0	3.4	3.0	6.0
CITRUS	3	2	1	1	0	0	3.3	2.4	12.7
CLAY	5	3	2	2	0	0	2.3	1.8	4.1
COLLIER	9	8	1	1	0	0	2.6	2.7	2.1
COLUMBIA	3	3	0	0	0	0	4.1	5.9	0.0
MIAMI-DADE	164	80	84	80	4	0	5.8	3.8	12.0
DESOTO	0	0	0	0	0	0	0.0	0.0	0.0
DIXIE	0	0	0	0	0	0	----	----	----
DUVAL	103	30	73	58	15	0	7.3	3.5	13.3
ESCAMBIA	62	40	22	15	7	0	11.3	10.1	14.2
FLAGLER	1	0	1	1	0	0	50.0	0.0	333.3
FRANKLIN	0	0	0	0	0	0	0.0	----	0.0
GADSDEN	3	0	3	2	1	0	600.0	0.0	1,000.0
GILCHRIST	0	0	0	0	0	0	----	----	----
GLADES	0	0	0	0	0	0	----	----	----
GULF	0	0	0	0	0	0	----	----	----
HAMILTON	1	1	0	0	0	0	500.0	500.0	----
HARDEE	1	1	0	0	0	0	250.0	250.0	----
HENDRY	1	1	0	0	0	0	333.3	333.3	----
HERNANDO	5	4	1	1	0	0	2.8	2.5	5.6
HIGHLANDS	3	1	2	2	0	0	2.3	1.0	8.5
HILLSBOROUGH	186	95	90	75	15	1	10.0	7.0	18.0
HOLMES	1	1	0	0	0	0	----	----	----
INDIAN RIVER	5	3	2	2	0	0	4.5	4.6	8.0
JACKSON	5	2	3	3	0	0	9.7	5.5	19.4
JEFFERSON	0	0	0	0	0	0	0.0	0.0	----
LAFAYETTE	0	0	0	0	0	0	0.0	0.0	----
LAKE	5	2	3	3	0	0	1.9	0.9	5.3
LEE	42	23	19	16	3	0	6.5	4.3	16.8
LEON	27	8	19	18	1	0	5.7	3.0	9.2
LEVY	0	0	0	0	0	0	0.0	0.0	----
LIBERTY	0	0	0	0	0	0	0.0	0.0	----
MADISON	0	0	0	0	0	0	----	----	----
MANATEE	13	8	5	5	0	0	4.6	3.7	7.6
MARION	6	4	2	2	0	0	2.2	2.0	3.2
MARTIN	1	0	1	1	0	0	0.6	0.0	3.6
MONROE	1	1	0	0	0	0	1.9	2.3	0.0
NASSAU	2	1	1	1	0	0	4.1	2.3	17.5
OKALOOSA	9	6	3	2	1	0	3.7	3.0	6.2
OKEECHOBEE	1	0	1	1	0	0	250.0	0.0	----
ORANGE	210	120	89	74	15	1	10.7	9.1	13.9
OSCEOLA	7	5	2	2	0	0	1.9	1.6	3.3
PALM BEACH	96	43	52	49	3	1	6.0	4.0	9.7
PASCO	4	3	1	0	1	0	2.9	2.4	6.2
PINELLAS	95	61	34	28	6	0	9.5	7.8	15.2
POLK	23	12	11	10	1	0	3.8	2.6	7.5
PUTNAM	2	2	0	0	0	0	4.7	7.0	0.0
SAINT JOHNS	4	3	1	1	0	0	3.6	3.2	5.0
SAINT LUCIE	8	4	4	3	1	0	3.7	3.0	5.0
SANTA ROSA	3	2	1	1	0	0	8.5	6.4	22.7
SARASOTA	8	5	3	3	0	0	2.5	1.8	6.2
SEMINOLE	9	4	5	4	1	0	3.0	1.8	6.6
SUMTER	0	0	0	0	0	0	----	----	----
SUWANNEE	2	2	0	0	0	0	400.0	400.0	----
TAYLOR	1	1	0	0	0	0	333.3	1,000.0	0.0
UNION	0	0	0	0	0	0	----	----	----
VOLUSIA	13	9	4	4	0	0	3.1	2.8	4.3
WAKULLA	1	1	0	0	0	0	500.0	500.0	----
WALTON	1	0	1	1	0	0	1.1	0.0	17.9
WASHINGTON	1	1	0	0	0	0	----	----	----

*Rates based on infant deaths by race of decedent, live births by race of mother.

TABLE F-6: RESIDENT INFANT DEATHS BY HISPANIC OR HAITIAN ORIGIN, BY COUNTY, FLORIDA, 2011

	TOTAL	HISPANIC ORIGIN							HAITIAN	NON-HISPANIC/HAITIAN	UNK
		TOTAL HISPANIC	MEXICAN	PUERTO RICAN	CUBAN	CENTRAL/SOUTH AMERICAN	OTHER/UNK HISPANIC				
FLORIDA	1,372	304	77	90	43	50	44	64	985	19	
ALACHUA	16	2	1	0	0	1	0	0	14	0	
BAKER	5	0	0	0	0	0	0	0	5	0	
BAY	20	3	2	1	0	0	0	0	17	0	
BRADFORD	1	0	0	0	0	0	0	0	1	0	
BREVARD	35	4	0	3	0	1	0	0	31	0	
BROWARD	129	18	1	6	0	7	4	16	91	4	
CALHOUN	0	0	0	0	0	0	0	0	0	0	
CHARLOTTE	5	0	0	0	0	0	0	1	4	0	
CITRUS	8	0	0	0	0	0	0	0	8	0	
CLAY	10	0	0	0	0	0	0	0	10	0	
COLLIER	16	4	2	0	1	0	1	2	10	0	
COLUMBIA	3	0	0	0	0	0	0	0	3	0	
MIAMI-DADE	147	61	2	6	23	15	15	13	68	5	
DESOTO	0	0	0	0	0	0	0	0	0	0	
DIXIE	2	0	0	0	0	0	0	0	2	0	
DUVAL	90	6	1	4	0	0	1	0	83	1	
ESCAMBIA	29	1	1	0	0	0	0	0	28	0	
FLAGLER	6	0	0	0	0	0	0	0	6	0	
FRANKLIN	0	0	0	0	0	0	0	0	0	0	
GADSDEN	6	0	0	0	0	0	0	0	6	0	
GILCHRIST	0	0	0	0	0	0	0	0	0	0	
GLADES	0	0	0	0	0	0	0	0	0	0	
GULF	1	0	0	0	0	0	0	0	1	0	
HAMILTON	3	0	0	0	0	0	0	0	3	0	
HARDEE	2	2	2	0	0	0	0	0	0	0	
HENDRY	3	1	1	0	0	0	0	0	2	0	
HERNANDO	14	1	1	0	0	0	0	0	13	0	
HIGHLANDS	3	1	0	0	1	0	0	0	2	0	
HILLSBOROUGH	142	43	10	11	8	5	9	3	94	2	
HOLMES	2	0	0	0	0	0	0	0	2	0	
INDIAN RIVER	16	1	1	0	0	0	0	2	13	0	
JACKSON	5	0	0	0	0	0	0	0	5	0	
JEFFERSON	1	0	0	0	0	0	0	0	1	0	
LAFAYETTE	1	1	0	1	0	0	0	0	0	0	
LAKE	20	3	0	0	1	1	1	0	17	0	
LEE	42	17	8	6	1	1	1	3	22	0	
LEON	18	2	2	0	0	0	0	0	16	0	
LEVY	0	0	0	0	0	0	0	0	0	0	
LIBERTY	3	0	0	0	0	0	0	0	3	0	
MADISON	3	0	0	0	0	0	0	0	3	0	
MANATEE	31	12	9	2	1	0	0	1	18	0	
MARION	23	5	3	1	0	1	0	0	18	0	
MARTIN	5	0	0	0	0	0	0	0	5	0	
MONROE	3	0	0	0	0	0	0	0	2	1	
NASSAU	3	1	1	0	0	0	0	0	2	0	
OKALOOSA	14	2	1	0	0	0	1	0	12	0	
OKEECHOBEE	1	0	0	0	0	0	0	0	1	0	
ORANGE	119	38	9	18	3	7	1	9	70	2	
OSCEOLA	25	14	1	8	1	1	3	0	11	0	
PALM BEACH	81	17	2	4	2	7	2	11	52	1	
PASCO	29	6	2	3	1	0	0	0	23	0	
PINELLAS	55	8	4	4	0	0	0	1	46	0	
POLK	48	8	6	1	0	1	0	2	38	0	
PUTNAM	7	0	0	0	0	0	0	0	7	0	
SAINT JOHNS	6	0	0	0	0	0	0	0	6	0	
SAINT LUCIE	14	1	0	0	0	1	0	0	13	0	
SANTA ROSA	11	0	0	0	0	0	0	0	11	0	
SARASOTA	10	2	2	0	0	0	0	0	8	0	
SEMINOLE	28	7	0	5	0	0	2	0	20	1	
SUMTER	5	1	0	1	0	0	0	0	4	0	
SUWANNEE	3	0	0	0	0	0	0	0	3	0	
TAYLOR	3	0	0	0	0	0	0	0	3	0	
UNION	1	0	0	0	0	0	0	0	1	0	
VOLUSIA	30	11	2	5	0	1	3	0	18	1	
WAKULLA	2	0	0	0	0	0	0	0	2	0	
WALTON	3	0	0	0	0	0	0	0	3	0	
WASHINGTON	1	0	0	0	0	0	0	0	1	0	

TABLE F-7: RESIDENT INFANT, NEONATAL AND POST-NEONATAL DEATHS FROM SELECTED CAUSES* BY RACE, FLORIDA, 2011

	TOTAL			POST NEO- NATAL	WHITE			POST NEO- NATAL
	NEONATAL		INFANT		NEONATAL		INFANT	
	<1 DAY	1-27 DAYS			<1 DAY	1-27 DAYS		
TOTAL	1,372	578	337	457	698	286	179	233
Intestinal Infectious Disease	1	0	0	1	0	0	0	0
Diarrhea & Gastroenteritis--Infectious Origin	15	0	0	15	7	0	0	7
Tuberculosis	0	0	0	0	0	0	0	0
Tetanus	0	0	0	0	0	0	0	0
Diphtheria	0	0	0	0	0	0	0	0
Whooping Cough	1	0	0	1	1	0	0	1
Meningococcal Infection	0	0	0	0	0	0	0	0
Septicemia	9	0	0	9	5	0	0	5
Congenital Syphilis	1	1	0	0	0	0	0	0
Gonococcal Infection	0	0	0	0	0	0	0	0
Acute Poliomyelitis	0	0	0	0	0	0	0	0
Varicella (Chicken Pox)	0	0	0	0	0	0	0	0
Measles	0	0	0	0	0	0	0	0
HIV Disease	0	0	0	0	0	0	0	0
Mumps	0	0	0	0	0	0	0	0
Other & Unspec Viral Diseases	6	0	2	4	3	0	2	1
Candidiasis	0	0	0	0	0	0	0	0
Malaria	0	0	0	0	0	0	0	0
Pneumocystosis	0	0	0	0	0	0	0	0
Other & Unspecified Infectious & Parasitic Diseases	2	0	0	2	1	0	0	1
Hodgkins Disease & Non-Hodgkins Lymphomas	0	0	0	0	0	0	0	0
Leukemia	2	0	0	2	1	0	0	1
Other & Unspecified Malignant Neoplasm	2	0	1	1	2	0	1	1
In Situ/Benign/Malignant Neoplasms Uncert/Unk Behavior	1	1	0	0	1	1	0	0
Anemias	0	0	0	0	0	0	0	0
Blood, Blood-Forming, Hemorrhagic Diseases	9	0	2	7	5	0	2	3
Disorders Involving Immune Mechanism	1	0	0	1	1	0	0	1
Short Stature	0	0	0	0	0	0	0	0
Nutritional Deficiencies	0	0	0	0	0	0	0	0
Cystic Fibrosis	0	0	0	0	0	0	0	0
Fluid/Electrolyte/Acid-Base/Volume Depletion Disorders	1	0	1	0	0	0	0	0
Other Endocrine, Nutritional, Metabolic Diseases	6	0	2	4	4	0	1	3
Meningitis	3	0	2	1	2	0	2	0
Infantile Spinal Muscular Atrophy, Type 1 (Werdnig-Hoffman)	0	0	0	0	0	0	0	0
Infantile Cerebral Palsy	1	0	0	1	1	0	0	1
Anoxic Brain Damage	1	0	0	1	0	0	0	0
Other Nervous System Diseases	13	2	4	7	7	0	4	3
Ear & Mastoid Process Diseases	0	0	0	0	0	0	0	0
Pulmonary Heart/Circulation Diseases	9	0	0	9	7	0	0	7
Pericarditis, Endocarditis, Myocarditis	1	0	1	0	1	0	1	0
Cardiomyopathy	6	0	3	3	2	0	1	1
Cardiac Arrest	0	0	0	0	0	0	0	0
Cerebrovascular Diseases	9	0	1	8	3	0	1	2
Other Circulatory System Diseases	9	1	4	4	5	1	2	2
Acute Upper Respiratory Infections	0	0	0	0	0	0	0	0
Influenza	0	0	0	0	0	0	0	0
Pneumonia	6	0	0	6	2	0	0	2

TABLE F-7 (Cont.): RESIDENT INFANT, NEONATAL AND POST-NEONATAL DEATHS FROM SELECTED CAUSES*, BY RACE, FLORIDA, 2011

	TOTAL			POST NEO-	WHITE			POST NEO-
	NEONATAL		INFANT		NEONATAL		INFANT	
	<1 DAY	1-27 DAYS			<1 DAY	1-27 DAYS		
Acute Bronchitis & Acute Bronchiolitis	6	0	0	6	2	0	0	2
Bronchitis, Chronic & Unspecified	1	0	0	1	0	0	0	0
Asthma	0	0	0	0	0	0	0	0
Pneumonitis Due to Solids & Liquids	0	0	0	0	0	0	0	0
Other & Unspecified Respiratory System Diseases	22	2	1	19	8	1	0	7
Gastritis, Duodenitis, Noninfective Enteritis/Colitis	1	0	1	0	0	0	0	0
Hernia Abdom Cavity & Intestinal Obstruct W/O Hernia	4	1	0	3	1	1	0	0
Other & Unspec Digestive System Disease	8	0	2	6	3	0	0	3
Renal Failure & Other Kidney Disorders	5	0	5	0	2	0	2	0
Other & Unspec Genitourinary System Dis	0	0	0	0	0	0	0	0
PERINATAL PERIOD CONDITIONS	723	479	213	31	343	220	108	15
Maternal Hypertensive Disorders	5	5	0	0	1	1	0	0
Maternal Conditions Unrelated Present Pregnancy	4	4	0	0	2	2	0	0
Incompetent Cervix	27	27	0	0	6	6	0	0
Premature Rupture of Membranes	43	41	2	0	15	14	1	0
Multiple Pregnancy	38	37	1	0	23	22	1	0
Maternal Complications of Pregnancy	16	15	1	0	7	7	0	0
Placenta Complications	15	11	4	0	5	3	2	0
Cord Complications	1	1	0	0	1	1	0	0
Chorioamnionitis	32	29	3	0	20	17	3	0
Other & Unspecified Membrane Abnormalities	0	0	0	0	0	0	0	0
Other Complications of Labor & Delivery	8	6	1	1	3	2	1	0
Noxious Influences Via Placenta or Breast Milk	1	1	0	0	1	1	0	0
Slow Fetal Growth & Fetal Malnutrition	6	1	4	1	4	1	3	0
Extreme Low Birth Weight or Extreme Immaturity	167	142	17	8	60	52	5	3
Other Low Birth Weight or Preterm	63	61	2	0	36	35	1	0
Long Gestation & High Birth Weight	0	0	0	0	0	0	0	0
Birth Trauma	1	1	0	0	1	1	0	0
Intrauterine Hypoxia	4	0	4	0	2	0	2	0
Birth Asphyxia	8	4	4	0	2	2	0	0
Respiratory Distress	27	14	12	1	13	8	5	0
Congenital Pneumonia	2	0	2	0	1	0	1	0
Neonatal Aspiration Syndromes	0	0	0	0	0	0	0	0
Interstitial Emphysema & Related Conditions	4	1	3	0	2	1	1	0
Pulmonary Hemorrhage	10	1	9	0	5	0	5	0
Chronic Respiratory Disease	6	0	0	6	3	0	0	3
Atelectasis	14	9	4	1	8	4	3	1
Other Respiratory Conditions	2	0	2	0	2	0	2	0
Bacterial Sepsis	58	14	40	4	29	7	20	2
Omphalitis With or Without Hemorrhage	0	0	0	0	0	0	0	0
All Other Infections	19	3	14	2	10	1	7	2
Neonatal Hemorrhage	36	10	25	1	18	5	13	0
Hemorrhagic Disease of Newborn	0	0	0	0	0	0	0	0
Hemolytic Dis Due to Isoimmunization/Perinat Jaundice	0	0	0	0	0	0	0	0
Hematological Disorders	3	2	1	0	2	2	0	0
Diabetes Mellitus, Maternal or Neonatal	0	0	0	0	0	0	0	0
Necrotizing Enterocolitis	18	0	17	1	10	0	10	0
Hydrops Fetalis Not Due To Hemolytic Dis	13	6	7	0	11	5	6	0

TABLE F-7 (Cont.): RESIDENT INFANT, NEONATAL AND POST-NEONATAL DEATHS FROM SELECTED CAUSES*, BY RACE, FLORIDA, 2011

	TOTAL			POST NEO- NATAL	WHITE			POST NEO- NATAL
	NEONATAL		1-27		NEONATAL		1-27	
	<1 INFANT	DAY			<1 INFANT	DAY		
Other Perinatal Conditions	72	33	34	5	40	20	16	4
CONGENITAL / CHROMOSOMAL ANOMALIES	248	86	73	89	155	60	45	50
Anencephaly & Similar Anomalies	12	10	2	0	7	5	2	0
Congenital Hydrocephalus	3	2	1	0	3	2	1	0
Spina Bifida	1	0	0	1	0	0	0	0
Other Cong Malf Nervous System	8	5	3	0	4	3	1	0
Congenital Malf of Heart	57	6	14	37	35	6	10	19
Other Congenital Malf of Circulatory Sys	14	0	8	6	9	0	5	4
Congenital Malf of Respiratory Sys	16	8	5	3	10	7	2	1
Congenital Anomalies of Digestive Sys	2	0	2	0	1	0	1	0
Congenital Malf of Genitourinary Sys	30	18	8	4	22	14	5	3
Congenital Malf of Musculoskeletal Sys	22	7	5	10	13	5	3	5
Downs Syndrome	6	1	3	2	0	0	0	0
Edwards Syndrome	30	7	12	11	21	5	9	7
Pataus Syndrome	13	8	2	3	10	7	2	1
Other Congenital Malf	27	13	7	7	14	5	3	6
Other Chromosomal Abnorm	7	1	1	5	6	1	1	4
Sudden Infant Death Syndrome	46	0	4	42	22	0	2	20
Symptoms, Signs, Abn Clinical/Lab Findings	90	4	8	78	45	1	3	41
All Other Diseases	0	0	0	0	0	0	0	0
Unint Inj: Motor Vehicle	7	0	0	7	3	0	0	3
Unint Inj: Other & Unspecified Transport	0	0	0	0	0	0	0	0
Unint Inj: Falls	0	0	0	0	0	0	0	0
Unint Inj: Firearms Discharge	2	1	1	0	1	1	0	0
Unint Inj: Drowning & Submersion	3	0	0	3	2	0	0	2
Unint Inj: Suffocation & Strangulation in Bed	40	0	2	38	21	0	0	21
Unint Inj: Other Suffocation & Strangulation	21	0	1	20	12	0	0	12
Unint Inj: Inhale/Ingest--Respiratory Tract Obstruction	7	0	2	5	4	0	1	3
Unint Inj: Smoke, Fire, Flames Exposure	0	0	0	0	0	0	0	0
Unint Inj: Poisoning & Noxious Substance Exposure	2	0	0	2	0	0	0	0
Unint Inj: Other & Unspecified	3	0	0	3	2	0	0	2
Homicide: Hanging, Strangulation, Suffocation	0	0	0	0	0	0	0	0
Homicide: Firearms Discharge	0	0	0	0	0	0	0	0
Homicide: Neglect, Abandonment, Maltreatment	5	0	0	5	1	0	0	1
Homicide: Other & Unspecified Means	10	0	0	10	8	0	0	8
Medical & Surgical Care Complications	1	0	1	0	1	0	1	0
Other External Causes	2	0	0	2	1	0	0	1

* ICD-10 codes associated with each cause of death group are presented on pages (xiv-xvi).

TABLE F-7 (Cont.): RESIDENT INFANT, NEONATAL AND POST-NEONATAL DEATHS FROM SELECTED CAUSES*,
BY RACE, FLORIDA, 2011

	BLACK			POST NEO- NATAL	OTHER			POST NEO- NATAL
	NEONATAL		INFANT		NEONATAL		INFANT	
	<1 DAY	1-27 DAYS			<1 DAY	1-27 DAYS		
TOTAL	584	263	138	183	86	27	19	40
Intestinal Infectious Disease	1	0	0	1	0	0	0	0
Diarrhea & Gastroenteritis--Infectious Origin	8	0	0	8	0	0	0	0
Tuberculosis	0	0	0	0	0	0	0	0
Tetanus	0	0	0	0	0	0	0	0
Diphtheria	0	0	0	0	0	0	0	0
Whooping Cough	0	0	0	0	0	0	0	0
Meningococcal Infection	0	0	0	0	0	0	0	0
Septicemia	4	0	0	4	0	0	0	0
Congenital Syphilis	1	1	0	0	0	0	0	0
Gonococcal Infection	0	0	0	0	0	0	0	0
Acute Poliomyelitis	0	0	0	0	0	0	0	0
Varicella (Chicken Pox)	0	0	0	0	0	0	0	0
Measles	0	0	0	0	0	0	0	0
HIV Disease	0	0	0	0	0	0	0	0
Mumps	0	0	0	0	0	0	0	0
Other & Unspec Viral Diseases	2	0	0	2	1	0	0	1
Candidiasis	0	0	0	0	0	0	0	0
Malaria	0	0	0	0	0	0	0	0
Pneumocystosis	0	0	0	0	0	0	0	0
Other & Unspecified Infectious & Parasitic Diseases	1	0	0	1	0	0	0	0
Hodgkins Disease & Non-Hodgkins Lymphomas	0	0	0	0	0	0	0	0
Leukemia	1	0	0	1	0	0	0	0
Other & Unspecified Malignant Neoplasm	0	0	0	0	0	0	0	0
In Situ/Benign/Malignant Neoplasms Uncert/Unk Behavior	0	0	0	0	0	0	0	0
Anemias	0	0	0	0	0	0	0	0
Blood, Blood-Forming, Hemorrhagic Diseases	4	0	0	4	0	0	0	0
Disorders Involving Immune Mechanism	0	0	0	0	0	0	0	0
Short Stature	0	0	0	0	0	0	0	0
Nutritional Deficiencies	0	0	0	0	0	0	0	0
Cystic Fibrosis	0	0	0	0	0	0	0	0
Fluid/Electrolyte/Acid-Base/Volume Depletion Disorders	1	0	1	0	0	0	0	0
Other Endocrine, Nutritional, Metabolic Diseases	2	0	1	1	0	0	0	0
Meningitis	1	0	0	1	0	0	0	0
Infantile Spinal Muscular Atrophy, Type 1 (Werdnig-Hoffman)	0	0	0	0	0	0	0	0
Infantile Cerebral Palsy	0	0	0	0	0	0	0	0
Anoxic Brain Damage	1	0	0	1	0	0	0	0
Other Nervous System Diseases	5	2	0	3	1	0	0	1
Ear & Mastoid Process Diseases	0	0	0	0	0	0	0	0
Pulmonary Heart/Circulation Diseases	2	0	0	2	0	0	0	0
Pericarditis, Endocarditis, Myocarditis	0	0	0	0	0	0	0	0
Cardiomyopathy	4	0	2	2	0	0	0	0
Cardiac Arrest	0	0	0	0	0	0	0	0
Cerebrovascular Diseases	5	0	0	5	1	0	0	1
Other Circulatory System Diseases	4	0	2	2	0	0	0	0
Acute Upper Respiratory Infections	0	0	0	0	0	0	0	0
Influenza	0	0	0	0	0	0	0	0
Pneumonia	4	0	0	4	0	0	0	0

TABLE F-7 (Cont.): RESIDENT INFANT, NEONATAL AND POST-NEONATAL DEATHS FROM SELECTED CAUSES*,
BY RACE, FLORIDA, 2011

	BLACK			POST NEO-	OTHER			POST NEO-
	NEONATAL		INFANT		NEONATAL		INFANT	
	<1 DAY	1-27 DAYS			<1 DAY	1-27 DAYS		
Acute Bronchitis & Acute Bronchiolitis	4	0	0	4	0	0	0	0
Bronchitis, Chronic & Unspecified	1	0	0	1	0	0	0	0
Asthma	0	0	0	0	0	0	0	0
Pneumonitis Due to Solids & Liquids	0	0	0	0	0	0	0	0
Other & Unspecified Respiratory System Diseases	9	1	0	8	5	0	1	4
Gastritis, Duodenitis, Noninfective Enteritis/Colitis	1	0	1	0	0	0	0	0
Hernia Abdom Cavity & Intestinal Obstruct W/O Hernia	2	0	0	2	1	0	0	1
Other & Unspec Digestive System Disease	5	0	2	3	0	0	0	0
Renal Failure & Other Kidney Disorders	3	0	3	0	0	0	0	0
Other & Unspec Genitourinary System Dis	0	0	0	0	0	0	0	0
PERINATAL PERIOD CONDITIONS	341	235	94	12	36	23	10	3
Maternal Hypertensive Disorders	2	2	0	0	2	2	0	0
Maternal Conditions Unrelated Present Pregnancy	2	2	0	0	0	0	0	0
Incompetent Cervix	21	21	0	0	0	0	0	0
Premature Rupture of Membranes	26	25	1	0	2	2	0	0
Multiple Pregnancy	12	12	0	0	3	3	0	0
Maternal Complications of Pregnancy	5	4	1	0	3	3	0	0
Placenta Complications	9	7	2	0	1	1	0	0
Cord Complications	0	0	0	0	0	0	0	0
Chorioamnionitis	12	12	0	0	0	0	0	0
Other & Unspecified Membrane Abnormalities	0	0	0	0	0	0	0	0
Other Complications of Labor & Delivery	5	4	0	1	0	0	0	0
Noxious Influences Via Placenta or Breast Milk	0	0	0	0	0	0	0	0
Slow Fetal Growth & Fetal Malnutrition	2	0	1	1	0	0	0	0
Extreme Low Birth Weight or Extreme Immaturity	99	83	11	5	8	7	1	0
Other Low Birth Weight or Preterm	23	22	1	0	4	4	0	0
Long Gestation & High Birth Weight	0	0	0	0	0	0	0	0
Birth Trauma	0	0	0	0	0	0	0	0
Intrauterine Hypoxia	2	0	2	0	0	0	0	0
Birth Asphyxia	5	2	3	0	1	0	1	0
Respiratory Distress	11	5	6	0	3	1	1	1
Congenital Pneumonia	0	0	0	0	1	0	1	0
Neonatal Aspiration Syndromes	0	0	0	0	0	0	0	0
Interstitial Emphysema & Related Conditions	2	0	2	0	0	0	0	0
Pulmonary Hemorrhage	5	1	4	0	0	0	0	0
Chronic Respiratory Disease	2	0	0	2	1	0	0	1
Atelectasis	6	5	1	0	0	0	0	0
Other Respiratory Conditions	0	0	0	0	0	0	0	0
Bacterial Sepsis	28	7	20	1	0	0	0	0
Omphalitis With or Without Hemorrhage	0	0	0	0	0	0	0	0
All Other Infections	9	2	7	0	0	0	0	0
Neonatal Hemorrhage	17	5	11	1	1	0	1	0
Hemorrhagic Disease of Newborn	0	0	0	0	0	0	0	0
Hemolytic Dis Due to Isoimmunization/Perinat Jaundice	0	0	0	0	0	0	0	0
Hematological Disorders	0	0	0	0	1	0	1	0
Diabetes Mellitus, Maternal or Neonatal	0	0	0	0	0	0	0	0
Necrotizing Enterocolitis	8	0	7	1	0	0	0	0
Hydrops Fetalis Not Due To Hemolytic Dis	1	1	0	0	1	0	1	0

TABLE F-7 (Cont.): RESIDENT INFANT, NEONATAL AND POST-NEONATAL DEATHS FROM SELECTED CAUSES*, BY RACE, FLORIDA, 2011

	BLACK			POST NEO- NATAL	OTHER			POST NEO- NATAL
	NEONATAL		INFANT		NEONATAL		INFANT	
	<1 DAY	1-27 DAYS			<1 DAY	1-27 DAYS		
Other Perinatal Conditions	27	13	14	0	4	0	3	1
CONGENITAL / CHROMOSOMAL ANOMALIES	74	22	21	31	18	3	7	8
Anencephaly & Similar Anomalies	5	5	0	0	0	0	0	0
Congenital Hydrocephalus	0	0	0	0	0	0	0	0
Spina Bifida	0	0	0	0	1	0	0	1
Other Cong Malf Nervous System	2	1	1	0	2	1	1	0
Congenital Malf of Heart	18	0	3	15	4	0	1	3
Other Congenital Malf of Circulatory Sys	3	0	3	0	2	0	0	2
Congenital Malf of Respiratory Sys	6	1	3	2	0	0	0	0
Congenital Anomalies of Digestive Sys	1	0	1	0	0	0	0	0
Congenital Malf of Genitourinary Sys	8	4	3	1	0	0	0	0
Congenital Malf of Musculoskeletal Sys	7	2	1	4	2	0	1	1
Downs Syndrome	5	1	2	2	1	0	1	0
Edwards Syndrome	5	0	1	4	3	1	2	0
Patau Syndrome	3	1	0	2	0	0	0	0
Other Congenital Malf	10	7	3	0	3	1	1	1
Other Chromosomal Abnorm	1	0	0	1	0	0	0	0
Sudden Infant Death Syndrome	18	0	2	16	6	0	0	6
Symptoms, Signs, Abn Clinical/Lab Findings	40	2	5	33	5	1	0	4
All Other Diseases	0	0	0	0	0	0	0	0
Unint Inj: Motor Vehicle	3	0	0	3	1	0	0	1
Unint Inj: Other & Unspecified Transport	0	0	0	0	0	0	0	0
Unint Inj: Falls	0	0	0	0	0	0	0	0
Unint Inj: Firearms Discharge	0	0	0	0	1	0	1	0
Unint Inj: Drowning & Submersion	0	0	0	0	1	0	0	1
Unint Inj: Suffocation & Strangulation in Bed	16	0	2	14	3	0	0	3
Unint Inj: Other Suffocation & Strangulation	7	0	1	6	2	0	0	2
Unint Inj: Inhale/Ingest--Respiratory Tract Obstruction	2	0	1	1	1	0	0	1
Unint Inj: Smoke, Fire, Flames Exposure	0	0	0	0	0	0	0	0
Unint Inj: Poisoning & Noxious Substance Exposure	2	0	0	2	0	0	0	0
Unint Inj: Other & Unspecified	1	0	0	1	0	0	0	0
Homicide: Hanging, Strangulation, Suffocation	0	0	0	0	0	0	0	0
Homicide: Firearms Discharge	0	0	0	0	0	0	0	0
Homicide: Neglect, Abandonment, Maltreatment	3	0	0	3	1	0	0	1
Homicide: Other & Unspecified Means	1	0	0	1	1	0	0	1
Medical & Surgical Care Complications	0	0	0	0	0	0	0	0
Other External Causes	0	0	0	0	1	0	0	1

* ICD-10 codes associated with each cause of death group are presented on pages (xiv-xvi).